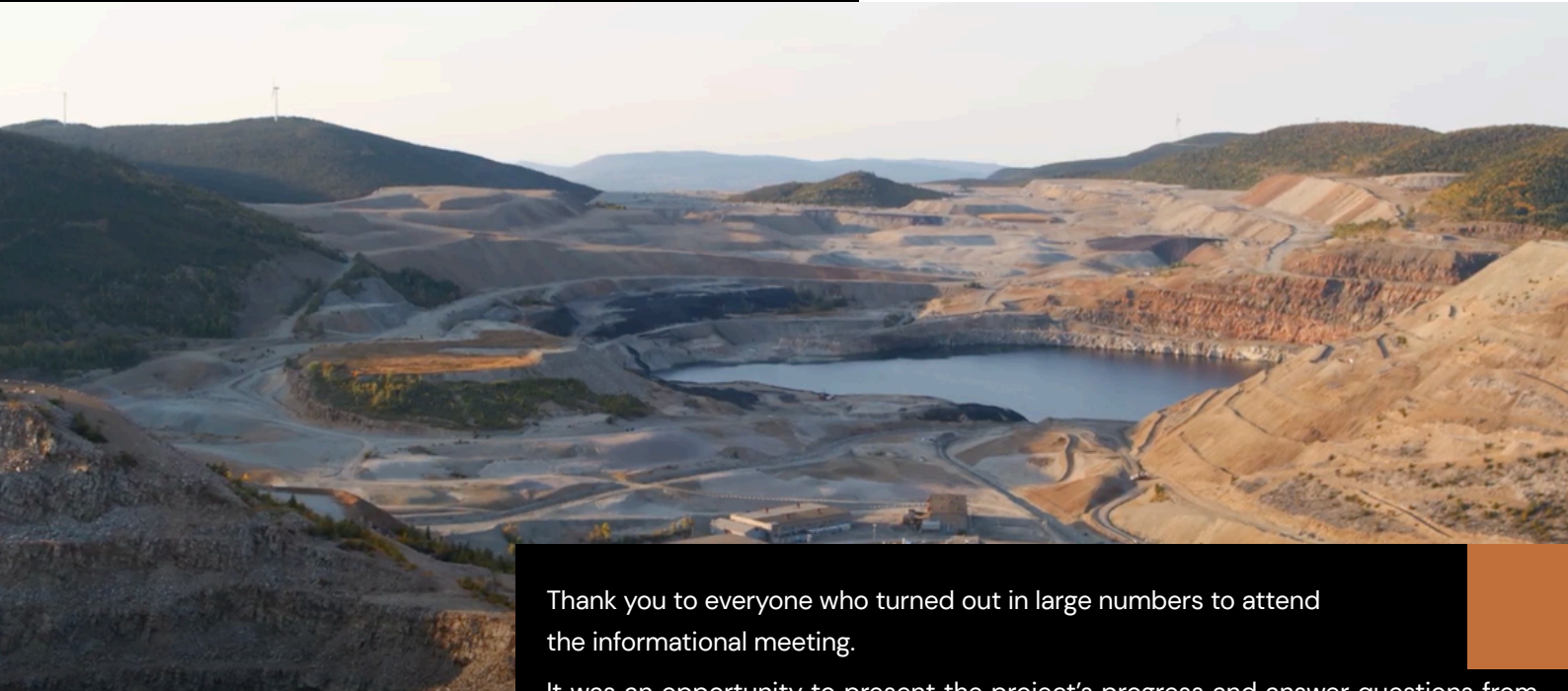


GASPÉ COPPER PROJECT SUMMARY

Public Information Session
April 14 2026



Copper Demand and Shortage

Copper is essential to modern technologies and the energy transition. Globally, analyses indicate that a significant and inevitable shortage, estimated at 27 million tons, is expected by 2050.

Recycling can help meet demand in the short term that is, for a period of three or four years. However, it will not be enough to meet growing demand.

This situation poses a major challenge for the development of clean technologies.

In this context, the Gaspé Copper project could contribute to the copper demand, with an estimated production potential of approximately 500,000 tons of copper concentrate per year.

Thank you to everyone who turned out in large numbers to attend the informational meeting.

It was an opportunity to present the project's progress and answer questions from the audience. A discussion period with residents and the media was scheduled at the end of the presentation.

Several members of the Osisko Metals team were present, including:

- Jeff Hussey, Chief Operating Officer
- Ann Lamontagne, Vice President – Environment and Sustainable Development
- Nathalie Lavoie, Director of Community Engagement
- Véronique Morency, Director of Community Relations

The keynote presentation was delivered by Robert Wares, Chief Executive Officer.



Dewatering of the pit

The drainage project is moving forward, with engineering studies currently underway.

Permit applications are expected to be submitted later this year. The drainage work will be carried out gradually and could take several years to complete. Work is scheduled to begin next year, pending the issuance of government permits.

Distinction between mineral resources and mineral reserves

Mineral resources are defined based on drill hole assay results, but they are not yet exploitable. To become economically exploitable, they must be converted into mineral reserves, which requires the completion of economic, technical, environmental, and social studies.

Not all resources have the same level of certainty:

- Measured resources may become proven reserves
- Indicated resources may become probable reserves
- Inferred resources are still too uncertain to be converted



Mineral Resource Estimate (MRE)

The 2025 drill program successfully converted and expanded the 2024 MRE to the Measured and Indicated resource categories and has added new significant higher-grade Inferred resources to the south.

The details of the results are presented in the press release of April 14, 2026, accessible via the following link : <https://osiskometals.com/news/>

The results presented confirm the presence of significant amounts of copper at the Gaspé Copper site, sufficient to justify further studies.

The project is therefore moving forward in a gradual and methodical manner, through the completion of technical, economic, environmental, and social studies.

Reopening of the Copper Interpretation Centre in Murdochville and the creation of the Osisko Space



Osisko Metals has signed an agreement with the City of Murdochville to occupy the Copper Interpretation Centre and create the Osisko Space.

Starting this summer, the centre will be open to visitors, providing information about the project, access to documents and studies conducted by Osisko Metals, as well as interactive tools to help visitors better understand the history of Murdochville and the work currently underway.

The centre is designed to be accessible to the public, promoting a better understanding of the information provided by Osisko Metals and fostering dialogue between residents and the company.



Exploration Work 2026

A new drill program of approximately 50,000 meters is planned for 2026.

The results of this work could inform the preliminary economic assessment, which aims to evaluate the project's viability.

These are key steps in determining the next phases of the project's development.



Field inventories 2026

Extensive field inventories will be conducted in 2026, with an estimated budget of \$3 million.

These surveys will focus in particular on:

- Vegetation and wetlands;
- Fish and their habitats;
- Birds;
- Reptiles and amphibians;
- Small mammals and bats.

The study area will cover approximately 170 km².

This work will help characterize the natural environment, document environmental constraints, and anticipate the project's potential impacts.



Some of the topics discussed :

- Drilling management in relation to the old underground tunnels and methods used to drill safely.
- The decision to opt for an open-pit mine and the difference in profitability between open-pit and underground mining.
- The significance of the 0.46% grade, compared to the former Murdochville mine and other copper mines around the world.
- Potential customers, including the agreement with Glencore.
- Comparison of historical environmental data.
- Discussion on recovery rates.
- Use of existing regional infrastructure and availability of land for operations.
- Interest in rail transport to reduce road trucking.
- Concerns regarding commuting and local impacts.
- Project timeline for construction and production start-up.
- Duration of the regulatory process and federal and provincial assessments in Quebec.
- Consideration of the region's connectivity and digital infrastructure needs.

Follow our project page : osiskometals.com/community/



facebook.com/osiskometals



osiskometals.com



murdochville@osiskometals.com