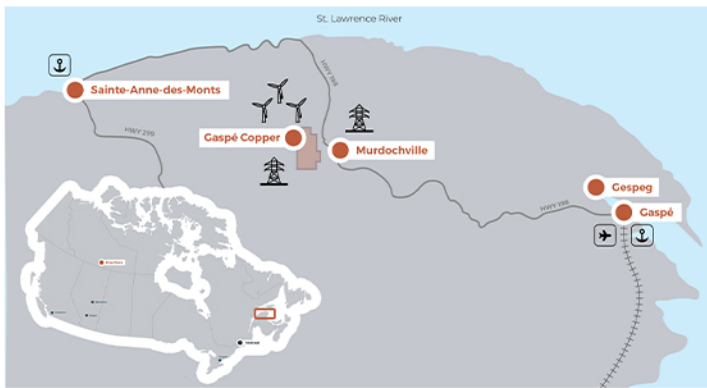


Osisko Metals is a critical metals exploration and development company. It is focused on creating value by developing past-producing mines with a clear permitting trajectory in Canada, a tier one mining jurisdiction.

Its experienced, highly successful leadership team has a proven track record: it discovered, developed, and sold the world-class Canadian Malartic and Windfall gold deposits, delivering significant shareholder return. After closing a \$100M bought-deal financing in December 2024, Osisko Metals has the proceeds to fund its Gaspé Copper Project to a construction decision, and its Pine Point Project (see overleaf) is funded to a final investment decision through a joint venture.

GASPÉ COPPER

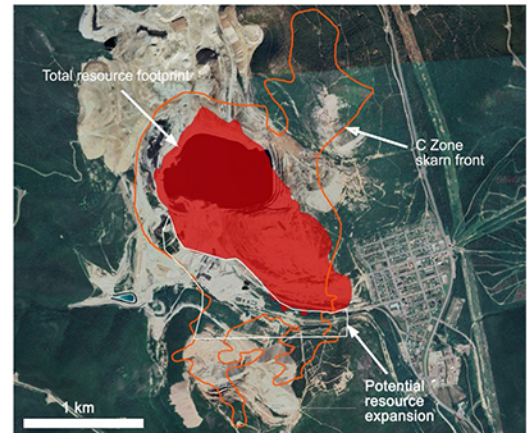
One of Canada's premier past-producing copper mines



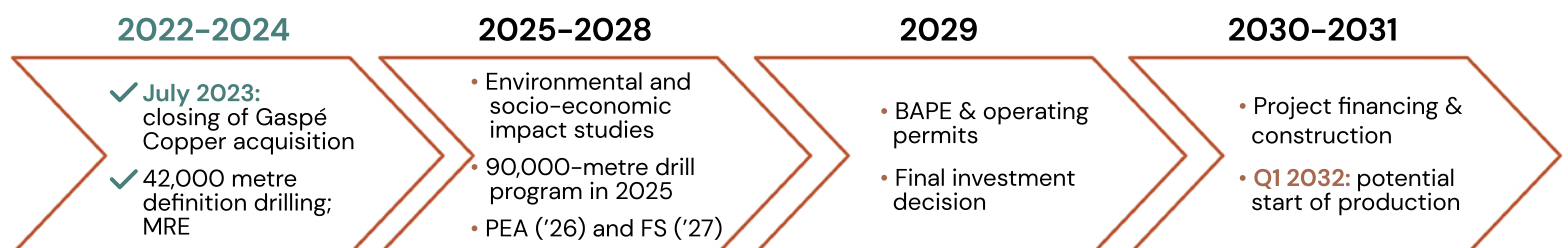
- » Located in the traditional territory of the Mi'gmaq First Nation of Gespe'gewa'gi, near the town of Murdochville in Québec's Gaspé Peninsula, approximately 825 km east of Montréal
- » With over 125 km of underground galleries and open pit mine, Gaspé Copper produced more than 141 Mt at 0.9% copper over 44 years
- » Québec is a very mining-friendly jurisdiction; the Company has strong support from the government and is fostering a social license by developing positive relationships with local communities
- » Paved road access to site, where there is a hydroelectric substation and windfarm
- » Port access via Gaspé and rail access in southern Gaspésie

A very large, historic, and untapped copper resource with exploration potential

- » Set to produce clean copper and molybdenum concentrates with excellent metal grades and recoveries:
 - Copper: 92% to 94% with copper concentrate grades of 24% to 28%
 - Molybdenum: 65% to 70% with molybdenum grades of 59%
 - Silver: 70% with payable silver credit added to the copper concentrate
- » Current Copper Mountain in-pit resource at 824 Mt @ 0.34% CuEq (Indicated) and 670 Mt @ 0.38% CuEq (Inferred)
- » At 4.91 billion pounds (2.23 million tonnes) of contained copper, as well as significant molybdenum (274 million pounds) and silver (46.0 million ounces), Copper Mountain's Indicated Resource hosts the largest undeveloped copper-molybdenum deposit by far in Eastern North America, exclusive of Inferred resources



The potential to be in production in a rising copper deficit market



Pine Point Mining Limited is a joint venture (JV) between Osisko Metals (74.7%) and Appian Natural Resources Fund III (25.3%) generating value in the critical metals space through the development of one of Canada's premier zinc-lead assets, the Pine Point Mining Camp in the Northwest Territories.

The JV leverages Appian's extensive mine development experience and includes a crucial investment of C\$100 million over four years into the Project that will advance the development of Pine Point to a shovel-ready status. This funding is expected to cover development costs including feasibility, environmental assessment and permitting, Indigenous and community engagement, final definition drilling, and additional exploration drilling.

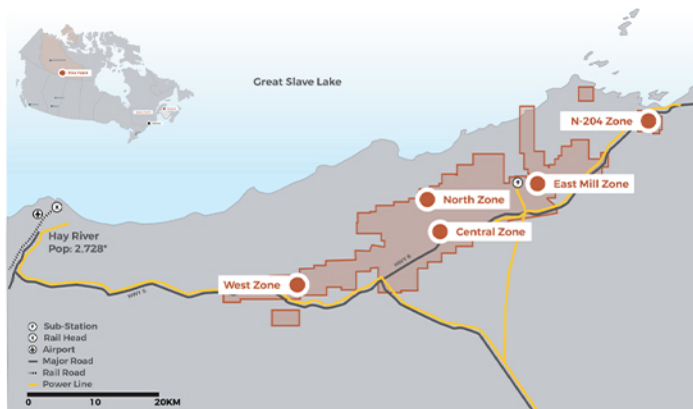
PINE POINT

Potential to become one of the world's largest zinc and lead mines

- » Indicated Mineral Resource of 49.5Mt grading 4.22% zinc and 1.49% lead, plus Inferred Mineral Resource of 8.3Mt grading 4.18% zinc and 1.69% lead
- » 2022 PEA: After-tax NPV of C\$602M, IRR of 25% and payback period of 3.8 years
- » Opportunities to enhance PEA through resource expansion and potential reduction in de-watering estimates and costs
- » Work is currently focused on completing feasibility study and preparing to launch permitting process
- » Demand for zinc expected to rise as a deficit in critical metal production looms



EXTENSIVE SUPPORT INFRASTRUCTURE IN PLACE



- » The Pine Point Mining Camp is located 60 km east of Hay River, Northwest Territories
- » Hydroelectric power substation located on site
 - MOU with NTPC Power to purchase excess Taltson Hydroelectricity
- » Rail access within 60 km, paved access road to the site and 100 km of haulage roads on site