



MANAGEMENT'S DISCUSSION AND ANALYSIS

FOR THE THREE-MONTH PERIOD ENDED

MARCH 31, 2024

OSISKO METALS INCORPORATED

Management's Discussion & Analysis

For the three-month period ended March 31, 2024

The following management discussion and analysis (the "MD&A") of the operations and financial position of Osisko Metals Incorporated ("Osisko Metals" or the "Company") for the three-month period ended March 31, 2024 ("Q1-2024"), should be read in conjunction with Osisko Metals' audited consolidated financial statements as at and for the year ended December 31, 2023 (the "Annual Financial Statements"). The MD&A is intended to supplement and complement the Company's unaudited condensed consolidated interim financial statements and related notes as of March 31, 2024, and for the three-month periods ended March 31, 2024 and 2023 (the "Financial Statements").

The Financial Statements have been prepared in accordance with International Financial Reporting Standards as issued by the International Accounting Standards Board ("IFRS Accounting Standard"). Consequently, all comparative financial information presented in the MD&A reflects the consistent application of IFRS Accounting Standard.

Osisko Metals' management ("Management") is responsible for the preparation of the financial statements and other financial information relating to the Company included in this MD&A. The Board of Directors (the "Board") is responsible for ensuring that Management fulfills its responsibilities for financial reporting. In furtherance of the foregoing, the Board has appointed an Audit Committee composed entirely of independent directors. The Audit Committee meets with Management in order to discuss results of operations and the financial condition of the Company prior to making recommendations and submitting the financial statements to the Board for its consideration and approval for issuance to shareholders. The information included in the MD&A is as of May 15, 2024, the date when the Board approved the Financial Statements, following the recommendation of the Audit Committee. All monetary amounts included in this report are expressed in Canadian dollars ("CAD"), the Company's reporting and functional currency, unless otherwise noted. The MD&A contains forward-looking statements and should be read in conjunction with the risk factors described in the "Cautionary Statement Regarding Forward-Looking Statements" section.

Business Description

The Company was incorporated under the provisions of the *Business Corporations Act* (Alberta) on May 10, 2000 and obtained a listing pursuant to the policies of the TSX Venture Exchange ("TSXV") on August 22, 2001. Since May 2017, the Company is registered under the *Business Corporations Act* (British Columbia). The Company's common shares are listed under the symbol "OM" on the TSXV, under the symbol "OB5" on the Frankfurt Stock Exchange and under the symbol "OMZNF" on the OTCQX Best Market (the "OTCQX").

Osisko Metals is an exploration and evaluation company focused on base metal projects located in Canada. The Company's objective is to position itself in proven mineral jurisdictions with a rich mineral endowment, proven metallurgy, infrastructure, friendly regulatory structure and political stability. The Company's vision is to become a leading base metals development company in Canada.

The Company is a partner (as described below) for one of Canada's premier past-producing zinc mining camps, the Pine Point Project (the "Pine Point Project"), located near Hay River in the Northwest Territories ("Hay River"). On July 30, 2020, Osisko Metals filed on SEDAR+, a National Instrument 43-101, *Standards of Disclosure for Mineral Projects* ("NI 43-101") independent Preliminary Economic Assessment (the "2020 PEA" or "Pine Point PEA"), entitled "*Preliminary Economic Assessment, Pine Point Project, Hay River, North West Territories, Canada*" for the Pine Point Project. The Company also acquired, from Glencore Canada Corporation ("Glencore"), a 100% interest in the past-producing Gaspé Copper Mine (the "Gaspé Copper Project"), located near Murdochville in the Gaspé peninsula of Québec. Gaspé Copper hosts the largest undeveloped copper resource in Eastern North America, strategically located near existing infrastructure.

On March 31, 2024, Osisko Metals held an interest of 54% (67% as at December 31, 2023) in Pine Point Mining Limited ("PPML"). Effective on April 6, 2023, following the transaction described below under the "*Transactions with Appian*" heading, Osisko Metals ceased to consolidate PPML as Management determined that Osisko Metals was no longer in a position of control over PPML. Immediately after, Management determined it was able to exert joint control on PPML and subsequently accounted for its investment as a joint venture under the equity method. Accordingly, Osisko Metals' deconsolidated PPML on April 6, 2023, and started accounting for its investment in PPML using the equity method.

In this MD&A, reference to Osisko Metals or the Company is to Osisko Metals Incorporated and its subsidiaries, excluding PPML.

OSISKO METALS INCORPORATED
Management's Discussion & Analysis
For the three-month period ended March 31, 2024

Highlights

From January 1, 2024 up to the date of this MD&A, the Company has advanced on the following key items:

- January 16, 2024 - announced assay results from the 2023 drilling program at Pine Point Project.
- February 22, 2024 - announced the sale of an additional 5% ownership interest in PPML to a subsidiary of Appian Natural Resources Fund III LP ("Appian"), a fund advised by Appian Capital Advisory, for an expected payment of approximately \$8.33 million.
- February 27, 2024 - announced the creation of a technical consultation committee to assist in developing a plan for the dewatering of the Mount Copper open pit at the Gaspé Copper Project. This committee is led by Osisko Metals' new VP Environment and Sustainable Development, Dr. Ann Lamontagne.
- April 16, 2024 - announced preliminary metallurgical and grindability testwork results from the Gaspé Copper Project.
- May 6, 2024 – announced an updated Mineral Resource Estimate ("MRE") at Copper Mountain as part of the Gaspé Copper Project.

Exploration and Evaluation Assets

The Company has interest in mining claims located in the Province of Quebec and the Province of New Brunswick. The Company has incurred the following expenditures on advancing its exploration and evaluation ("E&E") assets during Q1-2024:

Property	As at January 1, 2024	Additions	As at March 31, 2024
	\$	\$	\$
Quebec			
Gaspé Copper			
Mining rights	37,752,963	(257,099)	37,495,864
Exploration expenses	15,107,925	927,251	16,035,176
	<u>52,860,888</u>	<u>670,152</u>	<u>53,531,040</u>
New Brunswick			
Gilmour South			
Mining rights	266,223	8,380	274,603
Exploration expenses	-	-	-
	<u>266,223</u>	<u>8,380</u>	<u>274,603</u>
Key Anacon			
Mining rights	1,809,956	-	1,809,956
Exploration expenses	-	-	-
	<u>1,809,956</u>	<u>-</u>	<u>1,809,956</u>
Canadian Continental			
Mining rights	130,718	-	130,718
Exploration expenses	-	-	-
	<u>130,718</u>	<u>-</u>	<u>130,718</u>
Mount Fronsac			
Mining rights	511,464	5,080	516,544
Exploration expenses	-	-	-
	<u>511,464</u>	<u>5,080</u>	<u>516,544</u>
Other New Brunswick properties			
Mining rights	92,837	4,400	97,237
Exploration expenses	-	-	-
	<u>92,837</u>	<u>4,400</u>	<u>97,237</u>
Summary			
Mining rights	40,564,161	(239,239)	40,324,922
Exploration expenses	15,077,925	927,251	16,035,176
	<u>55,672,086</u>	<u>688,012</u>	<u>56,360,098</u>

The Gaspé Copper Project

The Gaspé Copper Transaction

On July 14, 2023, Osisko Metals completed the acquisition of a 100% interest in Gaspé Copper Project pursuant to a purchase agreement between the Company and Glencore (the "Gaspé Transaction"). In connection with this transaction:

- Glencore was issued a US\$25.0 million senior secured convertible note (the "Convertible Note") of the Company which is convertible into units of Osisko Metals at a price of \$0.40 per unit (each, a "Unit"), comprised of one Common Share and one-half Common Share purchase warrant of the Company (each whole warrant, a "Warrant"). Each Warrant is exercisable by Glencore at an exercise price of \$0.46 per Common Share until July 14, 2026. The Convertible Note bears interest at a rate equal to the Secured Overnight Financing Rate ("SOFR") + 4%, payable annually and, subject to adjustment or acceleration in certain circumstances, all outstanding principal and interest under the Convertible Note will be repaid in full by July 14, 2026. The Convertible Note is secured against all of the present and after acquired property of the Company.
- Glencore retained a 1% net smelter returns ("NSR") royalty on the historical Mount Copper open pit and a 3% NSR royalty on all other minerals extracted from the Gaspé Copper Project.
- Osisko Metals will make a cash payment of US\$20.0 million to Glencore upon the commencement of commercial production at the Gaspé Copper Project.
- Osisko Metals is required to incur a total of \$55.0 million in exploration, development and environmental expenditures, including permitting expenditures, over a period of four years, which commenced on March 25, 2022, with a minimum of \$20.0 million to be incurred by March 25, 2024. A penalty will be payable to Glencore as a percentage of the expenditure deficit as compared to this commitment.
- Osisko Metals entered into an offtake agreement with Glencore to purchase 100% of the concentrates produced at the Gaspé Copper Project.
- The Parties entered into an investor rights agreement (the "Investor Rights Agreement"), pursuant to which Glencore has been granted certain investor rights, provided that it maintains certain ownership thresholds in the Company. Among other things, the Investor Rights Agreement provides Glencore with the right to designate one director for appointment to the board of directors of the Company, participation rights in future equity issuances, piggyback registration rights and the right to maintain its pro-rata position in Osisko Metals.
- Assumption of environmental rehabilitation obligations in favor of the Minister of Natural Resources and Forests for \$5.3 million and the Town of Murdochville for \$0.8 million.

Upon conversion of the Convertible Note by Glencore, Glencore may hold, on a post-conversion basis, such number of Common Shares and Warrants that would exceed 20% of the pro forma issued and outstanding Common Shares, both on a non-diluted and partially-diluted, post-conversion basis, thus resulting in Glencore becoming a Control Person (as such term is defined in the policies of the TSXV) of the Company. Accordingly, in accordance with the policies of the TSXV, the disinterested shareholders of the Company were required to approve Glencore as a Control Person of the Company, which approval was obtained at a meeting of shareholders held on June 23, 2022.

In accordance with the terms of the Investor Rights Agreement, Mr. Peter Wright was appointed to the Board. Mr. Wright has served as Director and Vice President, Legal, with Glencore since 2018, having joined the company in 2014.

Gaspé Copper Project Inferred Mineral Resource Estimate

On June 13, 2022, the Company filed a technical report in accordance with NI 43-101 in connection with the initial Inferred Mineral Resource Estimate (the "Initial MRE") at Mount Copper as part of the Gaspé Copper Project (see press release dated April 28, 2022, entitled, "*Osisko Metals Announces Maiden Resource at Gaspé Copper - Inferred Resource of 456Mt Grading 0.31% Copper*"). This resource is pit-constrained to mineralization surrounding the past-producing Mount Copper open pit mine ("Mount Copper Expansion Project") and uses a base case of US\$3.80/lb copper and a lower cut-off grade of 0.16% sulphide copper.

OSISKO METALS INCORPORATED
Management's Discussion & Analysis
For the three-month period ended March 31, 2024

It was estimated using data from historical drilling completed between the 1960's and 2019 and the Initial MRE base case is as follows:

Classification	Tonnage	Grade Copper		Strip Ratio	Contained Copper Metal	
		Total (%)*	Sulphide (%)		Pounds	Metric Tonnes
Inferred	456 Mt	0.351	0.310	1.98	3,113,000,000	1,412,000

1. The independent Qualified Person ("QP"), in accordance with NI 43-101 standards, and for the Initial MRE statement is Yann Camus, Eng., SGS Canada Inc. ("SGS").
2. The effective date is April 12, 2022.
3. CIM (2014) definitions were followed for Initial MRE.
4. No economic evaluation of the Initial MRE has been produced.
5. SGS is not aware of any known environmental, permitting, legal, title-related, taxation, socio-political, marketing or other relevant issues that could materially affect the Initial MRE.
6. *Total copper includes acid-soluble oxidized copper plus sulphide copper. Contained copper includes sulphide copper only.

Highlights include:

- At 1.41 million tonnes (3.1 billion pounds) of contained copper, the Mount Copper Expansion Project hosts the largest undeveloped copper resource in Eastern North America, strategically located near existing infrastructure.
- Mineralization surrounds the former open pit mine periphery with a strip ratio currently estimated at 1.98.
- The Whittle pit-constrained Initial MRE is limited to the sulphide copper mineralization only that surrounds the Mount Copper historical open pit. Oxide mineralization levels are being evaluated to reduce what could be considered as waste.
- A 30,000 metre ("m") drill program may reduce the strip ratio, or the oxide/sulphide ratio in the resource model that would improve the sulphide grade. Additionally, the potential for by-product silver and molybdenum exists and will be defined with this drill program.

Drill Results at Gaspé Copper Project

The Company announced the commencement of a drill program (the "2022 Program") on April 12, 2022. Results from the 2022 Program were announced in the following press releases:

- August 4, 2022, entitled, "Osisko Metals Reports First Infill Drill Results at Gaspé Copper";
- October 27, 2022, entitled, "Osisko Metals Reports Additional Infill Drill Results at Gaspé Copper Including 102.0 m of 0.57% Copper and 2.20 gpt Silver";
- January 24, 2023, entitled, "Osisko Metals Reports Additional Drill Results at Mount Copper Including 1,011.0 Metres Grading 0.46% Copper and 3.19 G/T Silver"; and
- April 3, 2023, entitled, "Osisko Metals Reports Additional Drill Results at Mount Copper Including 300.0 Metres Grading 0.55% Copper and 3.59 G/T Silver".

On August 16, 2023, the Company announced the start of the 2023 drilling program at the Gaspé Copper Project. The 8,000 to 10,000 m program's focus will be on infill drilling of the Inferred Mineral Resource of the Mount Copper open pit deposit and will also begin evaluation of remaining higher-grade (2% to 4% Cu) skarn mineralization of the underground E Zone.

The expansion of the Mount Copper open pit was evaluated by Noranda in the 1980's but did not proceed due to the presence of the copper smelter located on the pit perimeter. Mining operations ceased in 1999 and the smelter closed in 2002. Since then, the entire mine, mill and smelter complex was dismantled and the site has been on care and maintenance. With the smelter gone, potential expansion of the Mount Copper pit is possible and this will be the focus of the Company's resource evaluation in the context of rising copper prices.

Metallurgical Testwork

On April 16, 2024, Osisko Metals announced preliminary metallurgical and grindability testwork results from the Gaspé Copper Project. Testwork was performed on eighteen composite samples of mineralized drill core from selected intersections of the 2023 drill program at Copper Mountain, and employed a conventional copper-molybdenum flotation flowsheet and reagents.

Highlights include:

- Copper recoveries averaged 91.9% from nineteen bulk Cu-Mo locked-cycle flotation tests (including one composite sample) and averaged 94.2% from three locked-cycle Cu-Mo separation tests.
- Copper concentrate grades averaged 24.1% Cu from nineteen bulk Cu-Mo locked-cycle flotation tests and averaged 28.0% Cu from three locked-cycle Cu-Mo separation tests.
- Molybdenum recoveries averaged 84.3% and concentrate grades averaged of 1.18% Mo from nineteen locked-cycle Cu-Mo bulk tests. Molybdenum recoveries averaged 72.3% and concentrate grades averaged of 0.85% Mo from three bulk Cu-Mo locked-cycle Cu-Mo separation test. Molybdenum stage recoveries average 87.2% and concentrate grade averaged 58.8% Mo. The overall combined molybdenum recoveries averaged 65.2%.
- Silver recoveries averaged 71.1% from nineteen bulk Cu-Mo locked-cycle flotation tests and averaged 71.8% from the three locked-cycle Cu-Mo separation tests, with concentrate grades averaging 120 g/t Ag for all locked-cycle tests.
- Eighteen grindability tests produced an average Bond Rod Mill Work index (RWi) of 13.8 kWh/t and an average Bond Ball Mill Work Index (BWi) of 10.5 kWh/t, indicating average hardness of mineralized material.

Preliminary testwork on Copper Mountain material produced excellent numbers. At approximately 92% average copper recoveries and 65% molybdenum recoveries, these results indicate that Gaspé Copper should produce both copper and molybdenum concentrates with excellent metal grades and a payable silver credit added to the copper concentrate. These results have surpassed expectations relative to historical numbers from past production at Copper Mountain and should provide positive input into ongoing PEA work. Pending multi-element analyses of final concentrates will provide trace element data that will establish if any smelter penalty thresholds are reached, and this additional information will be disclosed as soon as possible.

A bench-scale metallurgical test work program was undertaken at Base Metallurgical Laboratories and the testwork program included: 1) Sample Characterization; 2) Grindability; 3) Conventional flotation flowsheet and reagent schemes; 4) Batch and locked-cycle Cu-Mo bulk flotation tests to produce copper (Cu) and molybdenum (Mo) concentrates; 5) Composite Cu-Mo bulk flotation followed by Cu-Mo separation tests; 6) Head grades tested ranged from 0.21% to 0.90% copper, 44 to 1347 g/t molybdenum and 0.9 to 5.0 g/t silver.

Sample Selection

Eighteen composite samples, totaling of 1 100 kg, produced from drill core providing a suitable range of copper grades were selected for metallurgical testing. Head assays for the eighteen composite samples ranged from 0.21% to 0.90% copper, 44 to 1347 g/t molybdenum, 0.9 to 5.0 g/t silver and 0.01 to 0.07 g/t gold. Table 1 provides drill hole intervals and composite head grades for the metallurgical samples:

Table 1: Details of Metallurgical Sample Selection

Metallurgical Sample #	Hole ID	Interval From (m) -To (m)	Cu %	Mo (g/t)	Ag (g/t)
MGMET23-01	30-1005	225.0 - 244.5	0.43	49	2.5
MGMET23-02	30-1005	868.5 - 891.0	0.90	721	4.6
MGMET23-03	30-1003	388.5 - 405.0	0.38	21	4.0
MGMET23-04	30-1003	717.0 - 744.0	0.52	1347	3.5
MGMET23-05	30-1003	1171.5 - 1191.0	0.26	122	1.1
MGMET23-06	30-1012	513.0 - 531.0	0.47	152	2.2
MGMET23-07	30-1006	547.5 - 565.5	0.32	197	1.2
MGMET23-08	30-1008	546.0 - 564.0	0.47	486	3.2
MGMET23-09	30-1011	424.5 - 442.5	0.47	247	1.3
MGMET23-10	30-1024	702.0 - 717.0	0.29	272	0.9
MGMET23-11	30-1021A	388.5 - 408.0	0.33	312	1.4
MGMET23-12	30-1019	412.5 - 429.0	0.23	163	1.4
MGMET23-13	30-995	351.0 - 369.0	0.22	66	2.1

OSISKO METALS INCORPORATED

Management's Discussion & Analysis

For the three-month period ended March 31, 2024

MGMET23-14	30-999	741.0 - 765.0	0.31	300	1.6
MGMET23-15	30-984	273.0 - 291.0	0.21	63	1.2
MGMET23-16	30-988	235.5 - 253.3	0.30	111	1.9
MGMET23-17	30-979	216.5 - 236.0	0.39	125	5.0
MGMET23-18	30-993	199.5 - 217.5	0.22	44	1.5

Testing Procedures

Composites were created based on the selected drill core intervals (Table 2). Once created each composite was stage crushed to nominal 1.5 inch (3.8 cm), representative mass was split out for SMC testing at the -31.5 mm and +26.5 mm range. Once SMC testing was completed the products were returned and the composites were again stage crushed to -½ inch (-1.3 cm) where 15 kg was removed for Rod Mill Work Index testing. The remaining mass was stage-crushed to -6 mesh. The crushed material was blended and split into 24 kg sub-lots, each sub-lot was rotary split into 2 kg charges. A single test charge was riffle split to remove 250 g for head assay. The head cuts were pulverized to 80% passing 75 µm.

Metallurgical samples comprising drill core were crushed, split and sub-sampled for comminution testwork and head assays. Samples were wet-grinded in a closed batch mill at 65% solids targeting the required grind size. Ground samples were discharged into a flotation cell and pulp-level adjusted to the appropriate volume and density for flotation testing. The pulp was conditioned with reagents before beginning flotation. A series of open-circuit batch rougher and cleaner flotation tests were undertaken to optimize flotation conditions prior to operating locked-cycle flotation tests. The combined rougher concentrate was dewatered ahead of regrinding while retaining the process water for the cleaner stage. The rougher concentrate was reground to a target size with the regrind discharge size confirmed by laser particle sizing. The reground product was cleaned in successive dilution stages. The final concentrate and intermediate tails were filtered and dried separately in a low temperature oven before assaying.

The general approach to locked cycle testing was conducted as per the batch tests. Each cycle test was completed with 5 cycles, the rougher and 1st cleaner were completed open circuit, the intermediate cleaner tailings were recirculated to the feed of each subsequent stage for the following cycle; that is the 3rd cleaner tailing of cycle A was recirculated to the 2nd cleaner Feed of cycle B, the 2nd cleaner tail A was recirculated to the feed of the 1st cleaner Feed B. This process continued for cycles C, D and E. All final products and final intermediate streams were filtered, dried, and assayed for metallurgical balancing. Locked cycle testing provides a methodology to best estimate steady-state metallurgical projections for a full-scale operation.

Reagents used for bulk Cu-Mo flotation included lime, potassium amyl xanthate (PAX), 3418A, and methyl isobutyl carbinol (MIBC). Nitrogen sparging, fuel oil, sodium hydrosulfide (NaHS) and MIBC were used for Cu-Mo separation.

Analysis was completed on pulverized sample splits using wet digestion methods for copper, molybdenum and silver. In each case, the samples were digested by a strong oxidization using a combination of Aqua-Regia, potassium chlorate and bromine. Copper was analyzed using atomic adsorption (AA) spectroscopy, and molybdenum and silver by inductively coupled plasma – optical emission spectroscopy (ICP-OES).

Metallurgical tests assay quality is evaluated by producing material balances of all products reconciled head which is compared to the direct head for all elements in consideration.

Grindability

Grindability tests were performed on each of the metallurgical samples. The average SMC Axb value was 46.6, average Bond Ball Mill Work index (BWi) was 10.49 kWh/t, average Rod Mill Work Index (RWi) was 13.89 kWh/t and average Abrasion index (Ai) was 0.384.

Batch Flotation Tests

A composite sample was initially tested with average copper grade to determine the optimal grind size for further flotation tests. Four (4) grind sizes ranging from 80% passing (P80) of 66 microns to 125 microns were tested. P80 of 75 microns was selected as the primary grind size for further testing.

Bulk Cu-Mo Locked-Cycle Flotation

Cu-Mo locked cycle tests (LCT) were performed at a grind size of 75 microns for the rougher stage with regrind to a target of 30 microns for the cleaner stages. Table 2 shows the bulk Cu-Mo concentrate grades and recovery results. Copper concentrate grades ranged from 17.1% to 30.9% with recoveries ranging from 86.1% to 95.7%. Molybdenum grades ranged from 0.08% to 2.74% with recoveries ranging from 75.7% to 92.3%.

Table 2: Bulk Cu-Mo LCT Results

Test ID	Sample ID	Concentrate grade			Recovery (%)		
		Cu %	Mo %	Ag (g/t)	Cu	Mo	Ag
LCT25	LOM Comp	20.6	0.74	98	94.5	83.6	75.6
LCT66	MGMET23-01	30.4	0.35	182	94.5	88.2	85.3
LCT49	MGMET23-02	22.9	1.81	80	94.8	85.8	78.1
LCT59	MGMET23-03	24.0	0.08	193	93.3	76.3	84.4
LCT67	MGMET23-04	17.1	1.25	96	96.5	93.1	78.2
LCT60	MGMET23-05	25.5	1.06	64	95.1	85.0	66.5
LCT50	MGMET23-06	23.1	0.63	48	87.2	82.3	42.6
LCT61	MGMET23-07	24.8	1.57	47	94.6	89.8	60.4
LCT62	MGMET23-08	24.5	2.74	115	93.8	92.8	71.1
LCT51	MGMET23-09	24.8	1.17	40	92.0	86.5	47.8
LCT52	MGMET23-10	23.0	2.53	71	86.1	88.0	62.7
LCT65	MGMET23-11	17.1	1.12	67	87.1	75.7	74.0
LCT53	MGMET23-12	19.9	1.42	99	87.4	84.8	67.1
LCT56	MGMET23-13	25.3	0.61	165	90.1	79.6	70.2
LCT64	MGMET23-14	24.5	1.68	102	95.7	81.3	72.2
LCT57	MGMET23-15	29.3	1.10	139	90.4	84.3	76.2
LCT68	MGMET23-16	21.7	0.84	120	91.3	80.5	76.2
LCT54	MGMET23-17	28.0	0.75	334	94.7	75.4	86.8
LCT55	MGMET23-18	30.9	1.05	205	87.8	89.2	77.2
Average:		24.1	1.18	119	91.9	84.3	71.1

Cu-Mo Separation

To produce molybdenum concentrates, due to the low feed concentrations, metallurgical samples were combined to produce three larger composite samples (low-, medium- and high-grade copper samples) for batch bulk flotation tests and subsequent Cu-Mo separation testing. Table 3 shows the composite sample head grades. Copper head grades ranged from 0.26% to 0.55%, molybdenum grades ranged from 135 to 234 g/t and silver head were consistently 2.2 g/t.

Table 3: Composite Sample Assays for Cu-Mo Separation Tests

Composite Sample	Metallurgical Samples	Head Grades		
		Cu %	Mo (g/t)	Ag (g/t)
1	MGMET23-02, MGMET23-06, MGMET23-09	0.55 ¹	198 ¹	2.2 ¹
2	MGMET23-03, MGMET23-05, MGMET23-07, MGMET23-08, MGMET23-11, MGMET23-14, MGMET23-16	0.32	234	2.2
3	MGMET23-10, MGMET23-12, MGMET23-13, MGMET23-15, MGMET23-17, MGMET23-18	0.26	135	2.2

¹ Calculated head grade

Multiple large batch flotation tests were performed for each composite sample to produce bulk Cu-Mo concentrates followed by Cu-Mo separation tests. Three Cu-Mo separation locked-cycle tests were performed at a grind size of 30 microns for the rougher stage with regrind to a target of 15 microns for the cleaner stages. Table 4 shows final copper concentrate grades and recoveries for the locked-cycle tests. Copper grade ranged from 22.2% to 30.9% with recoveries ranging from 92.3% to 96.6%.

Table 4: Copper Concentrate Assays and Recoveries

Composite Sample	Assay			Recoveries %		
	Cu %	Mo %	Ag (g/t)	Cu	Mo	Ag
1	30.9	0.1	92	96.6	8.1	70.1
2	22.2	0.1	76	92.3	9.1	58.2
3	28.6	0.1	162	92.7	9.5	75.5

Table 5 shows final molybdenum concentrate grades and recoveries for the locked-cycle tests. Molybdenum grade ranged from 55.7% to 60.7% with recoveries ranging from 57.7% to 70.7%.

Table 5: Molybdenum Concentrate Assays and Recoveries

Composite Sample	Assay			Recoveries %		
	Cu, %	Mo, %	Ag (g/t)	Cu	Mo	Ag
1	0.35	60.0	29	0.01	57.7	0.3
2	1.03	55.7	33	0.08	67.3	0.5
3	0.55	60.7	48	0.02	70.7	0.3

Full multi-element analyses of final concentrates are pending and further testing is planned during 2024 to further optimize metallurgical performance.

Updated Mineral Resource Estimate at Gaspé Copper

On May 6, 2024, the Company announced a MRE at Copper Mountain as part of the Gaspé Copper Project. The updated MRE (see Table 6 below) comprises an open-pit Indicated Resource of 495 million tonnes grading 0.37% CuEq, representing a 30% increase in copper-equivalent metal content over the previously reported copper-only Inferred Resource (see April 28, 2022 press release), as well as greater than 99% conversion rate from Inferred to Indicated category.

At 3.25 billion pounds (1.47 million tonnes) of contained copper, not including significant molybdenum (180 million pounds) and silver (28 million ounces) resources (see Table 6 below), the Copper Mountain in-pit Indicated Resource hosts the largest undeveloped copper asset in Eastern North America.

OSISKO METALS INCORPORATED
Management's Discussion & Analysis
For the three-month period ended March 31, 2024

Other improvements in the updated MRE include a 38% reduction of the strip ratio (now estimated at 1.23) from the estimate in the previously reported Inferred Resource, based on the mineralization geometry that surrounds the former open pit mine.

This MRE will provide the basis for a Preliminary Economic Assessment, scheduled to be released in early Q1-2025 in the context of what Osisko Metals believes is the start of a strong long-term copper market. Furthermore, the Company strongly believes that this important asset could become a core component of Quebec's critical mineral development strategy that aims to provide essential metals for global decarbonization initiatives."

Table 6: Mineral Resource Estimate Base Case

Class	Tonnes	Cu Eq	Cu	Mo	Ag	Cu	Cu	Mo	Mo	Ag
	Mt	%	%	%	g/t	M lbs	kt	M lbs	kt	(koz)
Indicated	495	0.37	0.30	0.016	1.75	3,248	1,473	180	82	27,911
Inferred	6.3	0.37	0.28	0.019	1.44	39	18	3	1	291

1. *The independent qualified persons for the MRE, as defined by National Instrument ("NI") 43-101 guidelines, is Pierre-Luc Richard, P.Geo., of PLR Resources Inc. with contributions from Carl Michaud, P.Eng., of G-Mining for cut-off grade and Pit shell optimization, and Colin Hardie, P.Eng., from BBA, for metallurgical parameters. The effective date of the MRE is April 22, 2024.*
2. *These Mineral Resources are not mineral reserves as they have no demonstrated economic viability. No economic evaluation of these Mineral Resources has been produced. The quantity and grade of reported Inferred Resources in this MRE are uncertain in nature and there has been insufficient drilling to define these Inferred Resources as Indicated. However, it is reasonably expected that the majority of Inferred Mineral Resources could be upgraded to Indicated category with continued drilling.*
3. *The Qualified Persons are not aware of any known environmental, permitting, legal, title-related, taxation, socio-political, marketing or other relevant issues that could materially affect the MRE.*
4. *Calculations used metric units (metres, tonnes). Metal contents in the above table are presented in percent, pounds or tonnes. Metric tonnages and pounds were rounded, and any discrepancies in total amounts are due to rounding errors.*
5. *CIM definitions and guidelines for Mineral Resource Estimates have been followed. See Cautionary Note below for copper equivalency (CuEq) values.*

Building upon the information released in this updated MRE, an 8,000 to 10,000 m drill program is planned to commence in May 2024 that aims to 1) partially define Measured Resources and improve grades in the higher-grade core of the Copper Mountain deposit, which could provide approximately 60 Mt of higher grade "starter-pit" material estimated from a 0.40% Cu lower cut-off grade; and 2) test the potential for near-surface mineralization around the historical Needle Mountain mine that was the starter operation for Gaspé Copper in the 1950's (A and B Zones).

General parameters of the updated Mineral Resource Estimate

This resource is pit-constrained to mineralization surrounding the past-producing Copper Mountain open pit mine and uses, amongst other parameters, a long-term price of US\$4.00/lb copper (cut-off of 0.12% Cu) for pit shell modelling, pre-set eastern and southeastern geographical constraints on pit limits to minimize impacts on the town of Murdochville, Québec, from future potential mining operations, and a lower cut-off grade of 0.15% copper for base case in-pit resource estimation. The resource was estimated using data from historical drilling completed between the 1950's and 2019 and 37,390 m of drilling completed by the Company in 2022 and 2023. See below the detailed parameters.

Mineral Resource Sensitivity

The following table shows the resources reported at various in-pit cut-off grades within a pit shell modelled at a lower cut off of 0.12% Cu; the base case resource cut-off grade reported herein is 0.15% copper and is highlighted in bold text:

Table 7: Indicated Mineral Resource Estimates at Variable Cut-Off Grades

Class	Copper Cut-off (%)	Tonnage (Mt)	Strip Ratio	Grade		Copper Metal Resource	
				Cu %	Mo %	M lbs	kt
Indicated	0.12	572	0.93	0.28	0.015	3,476	1,576
	0.15	495	1.23	0.30	0.016	3,248	1,473
	0.20	376	1.94	0.34	0.018	2,791	1,266
	0.25	273	3.05	0.38	0.020	2,279	1,034
	0.30	186	4.93	0.43	0.022	1,758	797
	0.40	86	11.9	0.53	0.025	1,000	454

Same footnotes as Table 6 apply to this table.

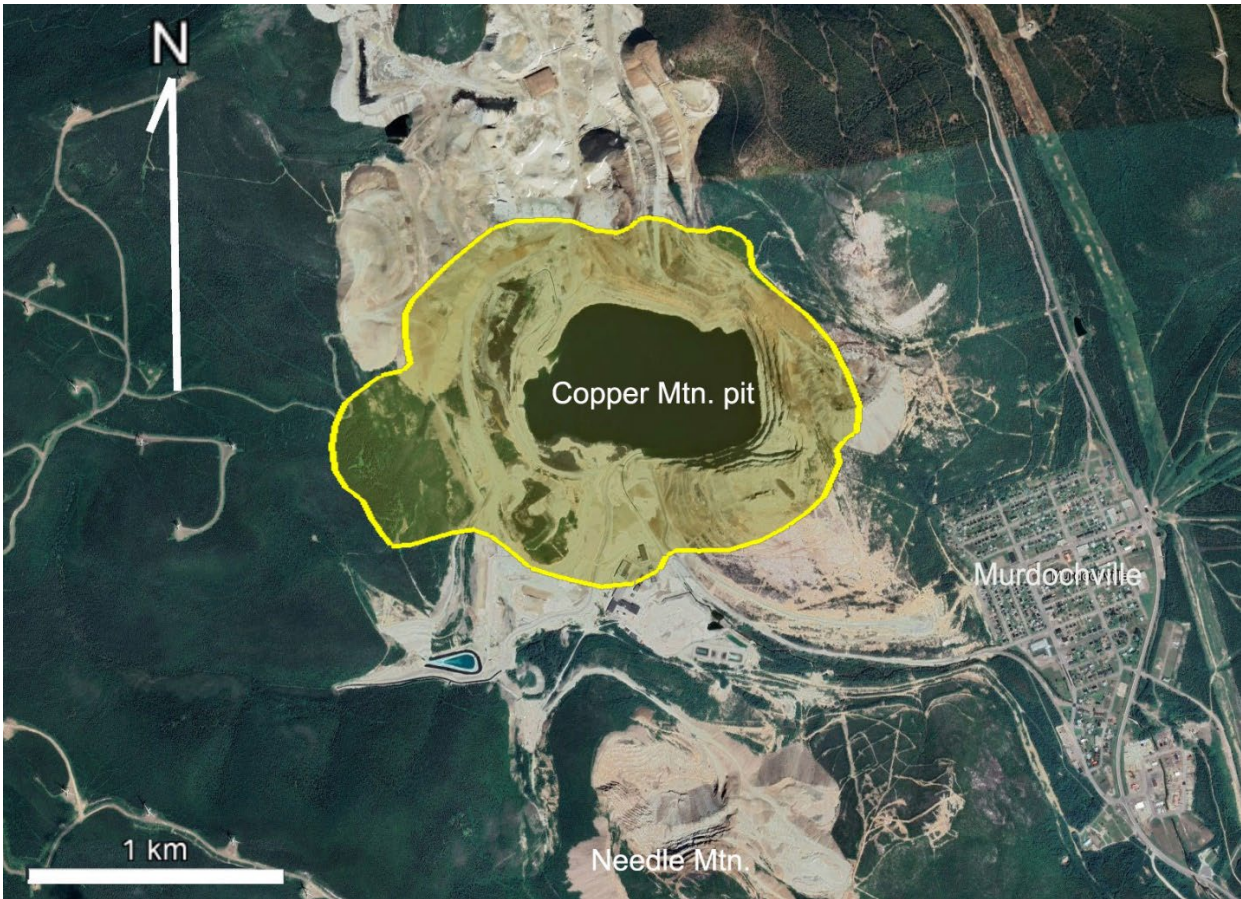
Potential for Additional Mineral Resources at Gaspé Copper

End-of-mine historical mineral resources at Gaspé Copper that are not NI 43-101 compliant are reported in the Noranda/Falconbridge Annual Reports 1998-2000, Québec government mining assessment reports and in Hussey & Bernard (SME Aug 1998, p. 36-44). The following disclosure describes areas of remaining mineralization at Gaspé Copper that the Company believes offer excellent potential for additional mineral resources. Osisko Metals' strategy at the present time is to focus on the economic viability of the currently defined Copper Mountain resource, and if this can be achieved, evaluation of mineralized zones described below will follow with additional drill programs.

Larger open pit resource potential at Copper Mountain

The current modelled Whittle pit shell includes pre-set eastern and southeastern geographical constraints on pit limits designed to minimize impacts on the town of Murdochville, Québec from potential future mining operations (Figure 1), namely leaving the southern portion of Copper Mountain intact. Geological modelling of stockwork mineralization and residual disseminated skarn mineralization occurring between the Copper Mountain and Needle Mountain historical open pits, the latter located 1.6 kilometers south of Copper Mountain, indicates potential for a significantly larger open pit resource at Gaspé Copper. Further geological and pit modelling is required to evaluate such potential and this work is ongoing. In the event that a larger viable pit-constrained resource can be defined, the Company will evaluate the possibility of reconfiguring the current layout of the site to minimize disturbance and ensure the protection and safety of the residents of Murdochville and the surrounding environment.

Figure 1. Plan view - footprint of the currently modelled Whittle pit encompassing the base case mineral resource.



Open pit resource potential at Needle Mountain

Modelling of the residual copper mineralization along the perimeter and below the open pit A Zone and the underground B Zone at Needle Mountain, including residual pillars in the B Zone, indicates potential for a higher-grade, secondary open-pit resource that would be distinct from the Copper Mountain resource. The modelling is based entirely on 1950's and 1960's historical drill holes, which were only partially assayed for copper and not for molybdenum nor silver. This area will be tested with a Phase I, 4,000-metre drill program starting at the end of May 2024 and if successful, will be followed by a Phase II program later in the season.

High-grade residual mineralization near past underground operations

Residual underground skarn mineralization still remains in the form of pillars in the mined portion of the C Zone (grades of 1% to 2% copper), as well as massive sulfide/skarn mineralization in the deeper E Zone (grades of 3% to 4% copper) within the E-38 deposit and up to 800 metres north of this deposit. The E Zone skarn aureole received little follow-up drilling north of the E-38 deposit and offers excellent potential for further resource definition at significantly higher copper and molybdenum grades. Drilling of the E Zone skarn is planned for 2025.

Parameters and criteria used for the Mineral Resource Estimate

General Whittle pit parameters used for the MRE include:

Parameter	Value	Unit
Copper Price	\$4.00	US\$ per pound
CAD:USD exchange rate	1.33	
Discount Rate	8.0	Percent
Royalty Rate	1.0	Percent
Cu concentrate transport + loading costs	\$10.40	US\$ per wmt
Cu concentrate shipping cost	\$66.25	US\$ per wmt
Cu concentrate insurance and other costs	\$23.35	US\$ per wmt
Cu concentrate smelter treatment cost	\$80.00	US\$ per wmt
Cu concentrate smelter refining cost	\$0.08	US\$ per pound
Cu concentrate grade	25.0	Percent
Payable Cu	96.5	Percent
In-Pit Mining Cost	\$2.85	US\$ per tonne mined
Mill Processing Cost	\$3.76	US\$ per tonne milled
General and Administrative Costs	\$1.57	US\$ per tonne milled
Overall Pit Slope - Rock	48	Degrees
Copper Recovery	92	Percent (%)
Mining loss / Dilution (open pit)	0 / 0	Percent / Percent
Waste Avg. Specific Gravity	2.67	Tonnes/cubic metre
Mineralization Specific Gravity (variable)	Avg. 2.73	Tonnes/cubic metre

- Resources are presented as undiluted and in situ for an open-pit scenario and are considered to have reasonable prospects for economic extraction. The constraining pit shell was developed using overall pit slopes of 48 degrees in bedrock and 20 degrees in overburden. The pit optimization to develop the resource-constraining pit shells was performed using Geovia Whittle 2022 software.
- The MRE wireframe was prepared using Leapfrog Edge v.2023.2.1 and is based on 570 drill holes and 41,198 samples. The drill hole database includes recent drilling totalling 44,407 metres in 83 drill holes (Xstrata 2011-2012, Glencore Canada 2019 and Osisko Metals 2022-2023) and also incorporates historical drill holes totalling 126,515 metres in 487 drill holes (Noranda 1998 and earlier). Drill hole data verification was performed by verifying the coherence of the information but not its correctness; original logs and laboratory certificates were only available for 2011, 2012, 2019, 2022 and 2023 drill holes. The cut-off date for the drill hole database was February 12, 2024.
- Composites of 10-metre lengths were created inside the mineralization volume. A total of 12,760 composites were generated with an average grade of 0.27 %Cu. High-grade capping was done on the composited assay data; composites were capped at 1.50% for Cu, 0.16% for Mo, and 7.5g/t for Ag.
- Pit constrained Mineral Resources for the base case are reported at a cut-off grade of 0.15 % Cu in sulfide within a conceptual pit shell based on a 0.12% Cu lower cut-off. The cut-off grades will be re-evaluated on an ongoing basis in light of future prevailing market conditions and costs.

OSISKO METALS INCORPORATED

Management's Discussion & Analysis

For the three-month period ended March 31, 2024

- Contained copper in the resource includes sulfide copper only and soluble copper was ignored. It was assumed for this MRE that only the copper contained in sulfides could have economical potential. Therefore, the soluble copper that is present as oxides and carbonates was removed and significant oxidized zones are all located in the south-west portion of the deposit. The proportion of the copper contained as soluble copper relative to sulfides is correlated to the depth of the mineralization. Therefore, depth from the original topographic surface was modeled and used to estimate the percentage of copper that would be contained as soluble copper within the MRE.
- Specific gravity values were estimated using data available in the historical drill holes. Values were interpolated for the mineralized solid - the average value is 2.73 tonnes/cubic metre. Surrounding barren lithologies were assigned the average specific gravity value from all measured samples.
- Modelled base case pit shell measures 2,100 X 1,500 m and reaches a maximum depth of approximately 700 m.
- Grade model resource estimation was calculated from drill hole data using an ordinary kriging (OK) interpolation method in a sub-blocked model using blocks measuring 10 m x 10 m x 10 m in size and sub-blocks down to 1.25 m x 1.25 m x 1.25 m. Both ordinary kriging and inverse square distance (ID2) interpolation methods were tested, resulting in no material difference in the Mineral Resource Estimates.
- The Indicated and Inferred Mineral Resource categories are constrained to areas where drill spacing is less than 150 m and 300 m, respectively, and show reasonable geological and grade continuity.

Cautionary Statement Regarding Copper Equivalent Grades

Copper Equivalent grades are expressed for purposes of simplicity and are calculated taking into account 1) metal grades; 2) estimated long-term prices of metals: US\$4.00/lb copper, \$19.00/lb molybdenum and US\$22/oz silver; 3) estimated recoveries of 92%, 70% and 70% for Cu, Mo and Ag respectively and 4) net smelter return value of metals as percentage of the price, estimated at 86.5%, 90.7% and 75.0% for Cu, Mo and Ag respectively.

Qualified Persons

The MRE and technical information under the "Updated Mineral Resource Estimate at Gaspé Copper" heading was prepared and approved by independent qualified persons ("QP"), as defined by National Instrument ("NI") 43-101 guidelines: Pierre-Luc Richard, P.Geo., of PLR Resources Inc. with contributions from Carl Michaud, P.Eng., of G-Mining for cut-off grade and Pit Shell optimization, and Colin Hardie, P.Eng., from BBA, for metallurgical parameters. Technical information relating to historical copper deposits at Gaspé Copper has been reviewed by Jeff Hussey, P. Geo., a non-independent Qualified Person in accordance with NI 43-101 standards, registered in the Province of Québec.

Christian Laroche is a consultant for Synectiq Inc. and the independent QP responsible for the technical data related to all metallurgical testing on the Gaspé Copper Project in this MD&A. Mr. Laroche is a registered member of the *Ordre des Ingénieurs du Québec*.

Technical Consultation Committee

On February 27, 2024, the Company announced the creation of a technical consultation committee to assist in developing a plan for the dewatering of the Mount Copper open pit at the Gaspé Copper Project. This committee is led by the Company's new VP Environment and Sustainable Development, Dr. Ann Lamontagne.

Since closure and remediation of the former Gaspé Copper mine site, the Mount Copper open pit has flooded. In order to evaluate the viability of restarting open pit mining operations at the Gaspé Copper Project, the pit must be dewatered as soon as possible to allow for improved deeper in-pit resource evaluation and geotechnical drilling. Osisko Metals is committed to doing so in a responsible manner that is inclusive of environmental factors and key stakeholders in the region. Following ongoing environmental and engineering studies, the Company will elaborate a plan in collaboration with this committee and will then go through necessary steps to obtain permits from government authorities.

OSISKO METALS INCORPORATED

Management's Discussion & Analysis

For the three-month period ended March 31, 2024

The consultation and technical committee is composed of professionals from various organizations, including:

- The Mi'gma'wei Mawio'mi Secretariat;
- The Société de gestion des rivières de Gaspé;
- The Conseil de l'eau du Nord de la Gaspésie;
- The Conseil Régional de l'environnement de la Gaspésie;
- A biologist who is a citizen of Murdochville

The Company's initiative to create this committee was met with positive feedback from members of the committee, and a first working session was held in December 2023. Further meetings with this committee are planned for 2024 to allow for review of the dewatering plan and receive comments before the plan is submitted to governmental authorities. The plan will be made public in order to inform the local population of mitigation measures that will be implemented.

The Company's first mandate will be to develop a sound plan for dewatering of the Mount Copper pit, while ensuring that excess water discharged into the environment will not affect the human communities and fish habitat in downstream waterways. This plan will build upon environmental studies, notably on fish and fish habitat as well as riparian vegetation, which were conducted in the fall of 2023. A geomorphological study was also carried out in 2023 to characterize stream banks and flow beds to identify erosion-sensitive areas and validate that the addition of water will not promote bank erosion. Finally, water quality analyses have been completed at the Mount Copper pit and results indicate that the water meets environmental criteria for safe discharge. Additional water quality analyses at several strategic downstream locations will also ensure that dewatering will be carried out without impacting fish and fish habitat.

The Company is committed to developing the Gaspé Copper Project in collaboration with all stakeholders in the region, while meeting the highest standards of environmental management. The establishment of this committee is an important initiative towards devising a plan that brings more environmental professionals to the table and takes stakeholders' concerns into consideration."

The Pine Point Project

Unique among mining projects in the Northwest Territories, the Pine Point Project benefits from substantial infrastructure on the former Cominco Limited ("Cominco") era mine site and in the region. This includes paved government highway road access to the site, approximately 100 km of 25-metre-wide mining haul roads on site, and an active hydroelectric power substation in the middle of the Pine Point Project. Hay River is 91 km to the west of the original Pine Point townsite via highway 5 and it is considered the economic and infrastructure "Hub of the North" benefitting from a railway head operated by the Canadian National Railway ("CN") and direct road access from Edmonton. Located 60 km to the east of the Pine Point Project, is the Hamlet of Fort Resolution that also provides services to the Pine Point Project. The NTPC Taltson Dam feeds an active hydro electrical power substation located at the former and proposed concentrator location on the property which in turn is relayed and supplies power to Hay River and Fort Resolution.

During its 24-year production history (under Cominco), over 98 deposits were identified of which 52 were mined, producing nearly 64 million tonnes of ore. While in production, it was considered as Canada's most profitable zinc-lead mine. The Company has worked to selectively convert and upgrade the more than 40 undeveloped historical deposits to conform to the disclosure requirements of NI 43-101, as well as deploy modern innovative exploration tools to identify potential targets for resource expansion.

As of May 1, 2024, Mineral rights held by PPML in the Northwest Territories are as follows:

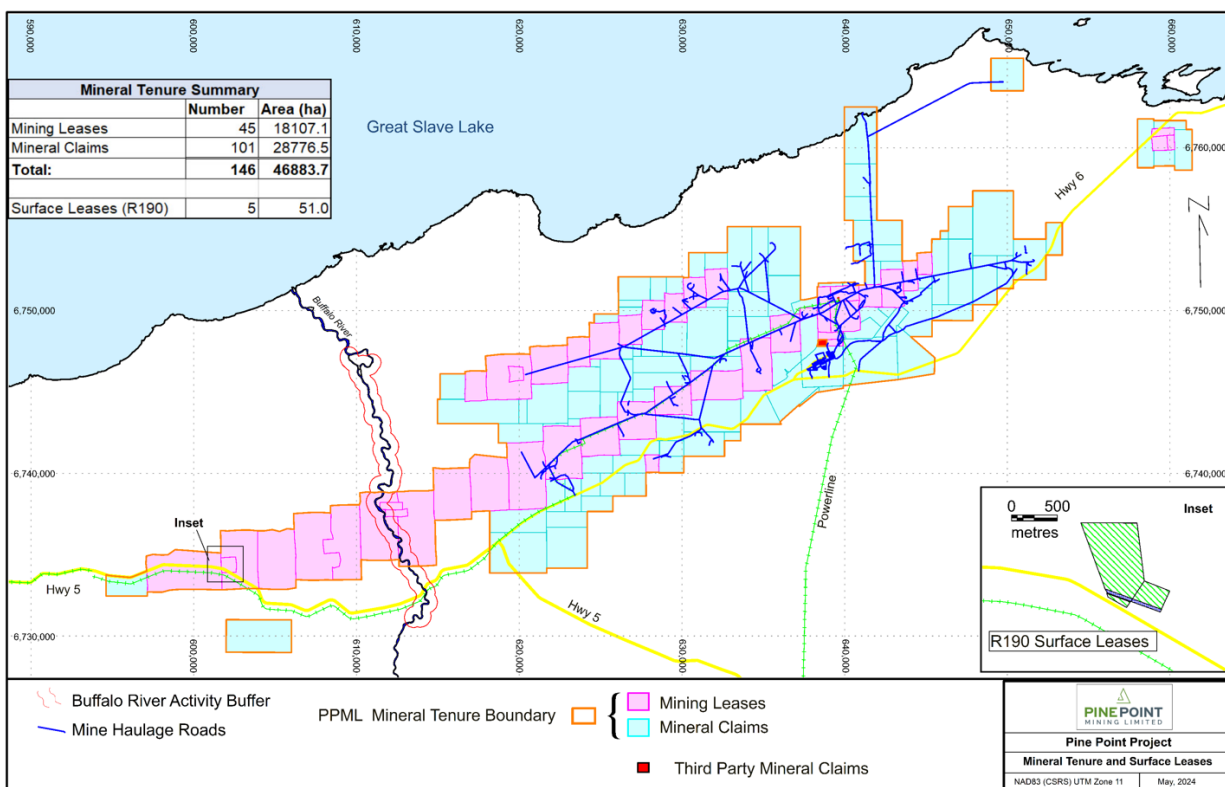


Figure 2: Pine Point Mining Camp, Mineral Tenure

Transactions with Appian

On February 21, 2023, the Company entered into the Investment Agreement with Appian, pursuant to which Osisko Metals and Appian have agreed to form the Joint Venture for the advancement of the Pine Point Project. The requisite shareholder and TSXV approvals were received in March 2023 and the Transaction closed on April 6, 2023.

Highlights of the Transaction include:

- Commitment by Appian to invest up to \$100.0 million over an estimated four-year period, to acquire an undivided 60% interest in PPML.
- The \$100.0 million investment includes an estimated \$75.3 million of funding (\$19.8 million of which was provided to PPML upon establishment of the Joint Venture, the "Initial Subscription") to advance the Pine Point Project to a Final Investment Decision ("FID"), or construction approval, and approximately \$24.7 million in cash payments, comprised of:
 - An \$8.3 million initial payment on closing of the Transaction to acquire an initial 9% interest in PPML; and
 - A milestone payment upon positive FID to bring Appian's ownership in PPML to 60%, expected to be approximately \$16.4 million. The final milestone payment will increase or decrease should the actual amount spent to FID differ from the estimated budget of \$75.3 million.
- In addition, Appian agreed to make a \$5.0 million investment in the common shares of Osisko Metals on closing, priced at \$0.2481 per share (being the 20-day volume weighted average price calculated as of the date of the Investment Agreement).

Concurrent with the execution with the Investment Agreement, Osisko Metals and Appian entered into an agreement for the issuance of a convertible instrument (the "Convertible Loan") to provide PPML with short-term interim funding of up to \$11.5 million to fund the current drilling program on the Pine Point Project, in accordance with the agreed initial program and budget for which \$6.7 million was advanced. When the Transaction closed on April 6, 2023, the \$6.7 million advanced by Appian and outstanding under the convertible instrument was converted into an

OSISKO METALS INCORPORATED
Management's Discussion & Analysis
For the three-month period ended March 31, 2024

ownership interest in PPML and the Initial Subscription was reduced by \$6.7 million outstanding under the Convertible Loan. At December 31, 2023 no amounts are outstanding to Appian by Osisko Metals.

Subsequent to the closing of the Transaction and until Appian has acquired an ownership interest of 60% in PPML (the "Target Ownership Percentage"), all funding in respect of the Pine Point Project will be made by way of cash calls issued by PPML to Appian. Osisko Metals will not be required to make any cash contributions to PPML until Appian has reached the Target Ownership Percentage, following which cash calls will be satisfied by each of Appian and Osisko Metals on a pro-rata basis pursuant to approved annual programs and budgets as determined by the board of PPML.

As part of closing of the Transaction, the Company and Appian entered into a Joint Venture Company Agreement and an Investor Rights Agreement, in substantially the forms attached to the investment agreement dated February 21, 2023 between the Company and Appian in respect of the Transaction, a copy of which is available on SEDAR+ (www.sedarplus.ca).

On February 22, 2024, the Company announced the sale an additional 5% ownership interest in PPML to Appian. The increase in Appian's target ownership interest in PPML from 60% to 65% is expected to result in additional proceeds to Osisko Metals of \$8.33 million, of which (i) \$6.67 million in cash was paid to Osisko Metals in connection with the closing of this transaction, and (ii) the remaining amount, estimated to be approximately \$1.67 million, based on certain budget assumptions and estimates of Management required to advance the Pine Point Project to a positive FID, to be paid as a milestone payment to Osisko Metals upon a positive FID (the "Additional Interest Disposition"). This amount represents the estimated increase in the milestone payment on account of the Additional Interest Disposition relative to the initial joint venture target ownership structure, based on the estimated budget of \$75.3 million to take the Pine Point Project to FID since the commencement of the joint venture.

After giving effect to the Additional Interest Disposition and based on the estimated budget of \$75.3 million to take the Pine Point Project to FID (and related assumptions therein), the milestone payment upon positive FID to bring Appian's ownership in PPML to 65% is expected to be approximately \$18.0 million. The final milestone payment will increase or decrease should the actual amount spent to FID differ from the estimated budget of \$75.3 million. There can be no certainty that the actual costs will be aligned with estimated budget or that any milestone payment will be made to Osisko Metals at all or that positive FID or construction decision on Pine Point Project will be achieved as budgeted or at all.

Pursuant to the Additional Interest Disposition, the Company and Appian entered into (i) an amending agreement to the Investment Agreement dated February 21, 2023, and (ii) an amendment and restatement of the joint venture company agreement dated April 6, 2023 to, among other things, provide for the following amendments to the joint venture:

- Increase in the target ownership interest by Appian in PPML from 60% to 65% – Appian will commit to funding all cash calls issued by the board of PPML to Appian until Appian has acquired an ownership interest of 65%.
- Board Size and Composition – Prior to the amendments, the board of directors of PPML consisted of four directors (two nominees from Appian and two nominees from Osisko Metals), with Appian having the right to appoint the Chair and the Chair having the casting vote. Pursuant to the amendments and subject to certain exceptions, the default board of directors of PPML shall consist of five directors (three nominees from Appian and two nominees from Osisko Metals). During any period in which Appian holds less than 65% of the shares of PPML and terminated its buyer commitments, the PPML board will consist of four directors, with Appian and Osisko Metals having the right to nominate two directors each, subject to certain exceptions.
- Casting Vote – In exchange for increasing the nominees of Appian to the board of directors of PPML from two to three nominees, the threshold for a casting vote by the Chair has been increased from 60% to 65% in the event Appian holds more than 50% but less than 65% of the shares of PPML and has terminated its buyer commitments.

Pine Point Project Advancement

An assessment report on mineral claims staked prior to 2022 was submitted to, and accepted by, the Government of Northwest Territories ("GNWT") in December 2021. This report documents work performed on the mineral claims to maintain the claims in good standing. All mineral claims staked prior to 2022 will have enough credits to maintain the claims in good standing for 10 years. This is a maximum term for mineral claims before they must be converted to Mineral Leases. Two additional claims were staked in 2022. These claims are in good standing for two years and work completed in September 2022 will provide work commitments to extend the term of these new claims.

Table 8: Pine Point Program Drilling Statistics as of May 15, 2024

	2017	2018	2019	2020	2021	2022	2023	2024	Total
Number of infill diamond drill holes	132	830	239	111	182	306	411		2,211
Number of geotechnical diamond drill holes (HQ3)							22	10	32
Number of exploration diamond drill holes								41	41
Number of air rotary drill holes							3		3
Number of reverse circulation holes					40				40
Number of metallurgical holes							59		59
Number of hydrogeological holes					34	23	25		82
Total Drill Holes	132	830	239	111	256	329	520	51	2,468
Number of infill diamond drill hole metres	11,759	55,263	12,154	6,614	9,143	15,937	30,710		141,580
Number of geotechnical diamond drill hole metres (HQ3)							2,145	1,193	3,338
Number of exploration diamond drill metres								2,900	2,900
Number of air rotary drill hole metres							395		395
Number of reverse circulation ("RC") metres					3,830				3,830
Number of metallurgical metres							4,126		4,126
Number of hydrogeological metres					5,156	1,598	1,350		8,103
Total Metres	11,759	55,263	12,154	6,614	18,129	17,534	38,726	4,093	164,272
Number of diamond drill hole assays					2,376	4,529	7,919	242	15,066
Number of RC hole assays					1,865				1,865
Total Assays	0	0	0	0	4,241	4,529	7,919	242	16,931

Reported Results

In a press release dated January 16, 2024, the Company announced all remaining drill results from the 2023 definition drilling program at the Pine Point Project (Table 9). In press releases dated September 5, September 28, October 12, and November 13, 2023, the Company announced the drill results from the 2023 drilling program at the Pine Point Project (Table 9).

Table 9: Drill hole composite results from press releases dated September 5, September 28, October 12, November 13, 2023, and January 16, 2024

Hole Name	Zone	Deposit	From	To	Drill Width	True Width	Zn	Pb	Zn+Pb
			(m)	(m)	(m)	(m)	%	%	%
January 16, 2024 Press Release									
K51-23-PP-004	C2	K51	34.00	45.00	11.00	10.98	12.48	2.23	14.71
K51-23-PP-005	C2	K51	16.30	19.00	2.70	2.69	11.25	1.11	12.36
K51-23-PP-005	C2	K51	36.00	37.00	1.00	1.00	3.33	0.02	3.35
K51-23-PP-005	C2	K51	40.00	45.00	5.00	4.98	8.47	1.02	9.49
K51-23-PP-009	C2	K51	39.00	41.00	2.00	2.00	2.60	0.30	2.90
K52-23-PP-003	C2	K52	37.00	38.00	1.00	1.00	2.73	0.38	3.11
K52-23-PP-004	C2	K52	35.00	36.00	1.00	1.00	3.23	0.26	3.49
K52-23-PP-004	C2	K52	39.00	40.00	1.00	1.00	8.99	1.11	10.10
K52-23-PP-004	C2	K52	42.00	43.00	1.00	1.00	3.34	0.23	3.57
K52-23-PP-005	C2	K52	41.00	44.00	3.00	3.00	2.31	0.49	2.80
K52-23-PP-009	C2	K52	37.00	38.50	1.50	1.50	3.03	0.63	3.66
K52-23-PP-009	C2	K52	43.00	44.50	1.50	1.50	6.77	0.94	7.71
K52-23-PP-010	C2	K52	35.00	37.00	2.00	1.99	4.64	0.34	4.99
K52-23-PP-010	C2	K52	44.00	46.00	2.00	1.99	1.61	0.93	2.53
K52-23-PP-014	C2	K52	43.00	44.00	1.00	1.00	3.54	1.48	5.02

OSISKO METALS INCORPORATED

Management's Discussion & Analysis

For the three-month period ended March 31, 2024

K52-23-PP-016	C2	K52	38.00	39.00	1.00	1.00	4.66	0.01	4.67
K52-23-PP-017	C2	K52	41.00	42.00	1.00	1.00	1.89	4.95	6.84
K52-23-PP-020	C2	K52	41.05	46.00	4.95	4.94	11.36	1.07	12.43
M48-23-PP-001	C2	M48	36.00	37.50	1.50	1.50	4.55	0.17	4.72
M48-23-PP-003	C2	M48	33.00	35.00	2.00	2.00	5.07	0.49	5.56
M48-23-PP-003	C2	M48	37.00	43.00	6.00	5.99	10.94	1.95	12.89
T37-23-PP-001	NE1	T37	6.50	7.15	0.65	0.65	3.12	0.02	3.14
T37-23-PP-002	NE1	T37	8.00	11.00	3.00	3.00	5.25	1.58	6.83
T37-23-PP-003	NE1	T37	14.00	17.00	3.00	2.99	4.16	0.92	5.07
T37-23-PP-004	NE1	T37	18.00	22.00	4.00	3.99	8.08	1.21	9.29
T37-23-PP-005	NE1	T37	23.00	25.00	2.00	1.99	2.18	5.66	7.84
T37-23-PP-006	NE1	T37	29.00	32.00	3.00	2.99	1.09	0.85	1.95
T37-23-PP-007	NE1	T37	9.00	11.00	2.00	2.00	3.67	0.08	3.74
X18-23-PP-003	NE2	X18	35.00	38.00	3.00	2.99	5.15	1.11	6.26
X18-23-PP-003	NE2	X18	42.00	43.00	1.00	1.00	2.43	0.00	2.43
X18-23-PP-003	NE2	X18	47.00	48.00	1.00	1.00	2.43	0.01	2.44
X49-23-PP-003	N1	X49	22.00	23.00	1.00	1.00	2.63	0.38	3.00
X49-23-PP-005	N1	X49	15.00	20.00	5.00	4.99	2.43	1.60	4.03
X49-23-PP-013	N1	X49	17.90	18.95	1.05	1.05	17.15	2.67	19.82
X49-23-PP-013	N1	X49	21.00	22.00	1.00	1.00	5.95	5.13	11.08
X49-23-PP-014	N1	X49	19.70	23.80	4.10	4.10	9.72	1.67	11.39
X49-23-PP-014	N1	X49	26.00	27.00	1.00	1.00	0.22	1.79	2.01
X49-23-PP-017	N1	X49	17.00	24.00	7.00	6.99	2.80	0.48	3.28
X49-23-PP-020	N1	X49	18.00	21.00	3.00	3.00	5.11	0.88	5.99
X49-23-PP-025	N1	X49	21.00	24.00	3.00	3.00	3.11	0.40	3.52
X49-23-PP-026	N1	X49	20.00	24.00	4.00	3.99	3.36	0.50	3.86
X49-23-PP-027	N1	X49	20.00	25.00	5.00	5.00	5.85	1.30	7.14
X59-23-PP-002	N1	X59	36.25	37.00	0.75	0.75	4.14	2.11	6.25
X59-23-PP-004	N1	X59	49.00	50.00	1.00	1.00	8.43	0.02	8.45
X59-23-PP-004	N1	X59	52.00	59.00	7.00	6.99	3.09	0.18	3.27
X59-23-PP-005	N1	X59	49.50	50.50	1.00	1.00	1.74	2.15	3.89
X59-23-PP-006	N1	X59	34.00	35.00	1.00	1.00	2.06	0.00	2.06
X59-23-PP-007	N1	X59	30.00	32.00	2.00	2.00	4.38	1.40	5.77
X59-23-PP-011	N1	X59	35.00	36.00	1.00	1.00	2.78	1.11	3.89
X59-23-PP-014	N1	X59	28.00	33.50	5.50	5.49	12.80	1.38	14.18
X59-23-PP-017	N1	X59	31.85	33.35	1.50	1.50	7.99	1.13	9.12
X60-23-PP-003	N1	X60	23.00	25.00	2.00	2.00	2.08	0.14	2.22
X60-23-PP-003	N1	X60	30.00	36.00	6.00	5.99	16.47	1.42	17.89
X60-23-PP-003	N1	X60	44.00	45.00	1.00	1.00	3.19	1.04	4.23
X60-23-PP-004	N1	X60	32.00	36.00	4.00	4.00	8.12	1.52	9.64
X60-23-PP-005	N1	X60	42.00	43.00	1.00	1.00	9.86	1.34	11.20
X60-23-PP-007	N1	X60	31.00	35.00	4.00	4.00	2.87	0.82	3.69
X60-23-PP-007	N1	X60	49.00	50.00	1.00	1.00	6.75	2.96	9.71
X60-23-PP-009	N1	X60	35.00	36.00	1.00	1.00	3.15	0.04	3.19
X61-23-PP-001	N1	X61	45.00	46.00	1.00	1.00	3.54	0.89	4.43
X61-23-PP-002	N1	X61	39.00	40.00	1.00	1.00	1.73	0.39	2.11
X61-23-PP-002	N1	X61	42.00	46.00	4.00	3.99	6.07	1.92	7.99
X61-23-PP-002	N1	X61	52.00	53.00	1.00	1.00	2.83	0.38	3.21
X64-23-PP-005	N1	X64	38.00	41.22	3.22	3.21	12.86	2.61	15.46
X64-23-PP-007	N1	X65	38.00	42.00	4.00	3.99	4.21	0.28	4.49
X64-23-PP-008	N1	X66	60.00	61.00	1.00	1.00	2.66	0.00	2.66
X68-23-PP-006	N1	X68	40.00	41.00	1.00	1.00	2.05	0.46	2.51
X68-23-PP-007	N1	X68	31.00	35.37	4.37	4.36	2.47	0.65	3.12
X68-23-PP-009	N1	X68	34.00	35.00	1.00	1.00	4.94	0.11	5.05
X68-23-PP-013	N1	X68	40.00	41.00	1.00	1.00	2.31	0.30	2.61
X68-23-PP-014	N1	X68	33.00	41.00	8.00	7.98	7.86	1.13	8.99
X68-23-PP-015	N1	X68	34.00	36.00	2.00	2.00	7.21	2.09	9.30
X68-23-PP-015	N1	X68	38.00	39.00	1.00	1.00	2.01	0.03	2.04

OSISKO METALS INCORPORATED

Management's Discussion & Analysis

For the three-month period ended March 31, 2024

X68-23-PP-016	N1	X68	36.00	42.50	6.50	6.49	6.38	0.93	7.30
Y55-23-PP-003	N1	Y55	20.00	21.00	1.00	1.00	2.29	0.22	2.51
Y55-23-PP-005	N1	Y55	23.00	25.00	2.00	2.00	2.90	0.41	3.31
Y55-23-PP-006	N1	Y55	22.00	23.00	1.00	1.00	2.13	0.41	2.54
Y55-23-PP-006	N1	Y55	25.00	26.00	1.00	1.00	4.14	0.66	4.80
Y55-23-PP-007	N1	Y55	19.00	21.00	2.00	2.00	21.43	0.28	21.71
Y55-23-PP-010	N1	Y55	17.00	18.00	1.00	1.00	2.33	0.00	2.33
Y55-23-PP-012	N1	Y55	17.00	18.40	1.40	1.40	19.90	13.65	33.55
Y55-23-PP-014	N1	Y55	22.00	23.00	1.00	1.00	6.33	1.58	7.91
Y57-23-PP-001	N1	Y57	9.60	13.00	3.40	3.39	2.59	1.04	3.63
Y57-23-PP-001	N1	Y57	15.00	16.00	1.00	1.00	3.97	0.02	3.99
Y57-23-PP-003	N1	Y57	15.00	19.00	4.00	3.99	2.92	0.07	3.00
Y57-23-PP-003	N1	Y57	24.00	26.00	2.00	2.00	2.48	0.11	2.59
Y57-23-PP-005	N1	Y57	13.00	17.00	4.00	4.00	3.75	0.11	3.86
Y58-23-PP-004	N1	Y58	25.00	26.00	1.00	1.00	1.34	0.72	2.05
Y58-23-PP-005	N1	Y58	21.00	22.00	1.00	1.00	5.70	0.01	5.71
Y58-23-PP-005	N1	Y58	24.00	26.00	2.00	2.00	5.28	0.11	5.38
Y58-23-PP-007	N1	Y58	22.00	23.00	1.00	1.00	3.04	0.01	3.05
Y62-23-PP-001	N1	Y62	34.00	40.00	6.00	5.97	4.49	1.19	5.68
Y62-23-PP-001	N1	Y62	45.00	46.00	1.00	0.99	1.65	0.52	2.17
Y62-23-PP-002	N1	Y62	38.00	41.00	3.00	2.99	7.22	0.83	8.05
Y62-23-PP-002B	N1	Y62	36.90	42.00	5.10	5.09	4.35	0.56	4.90
Y62-23-PP-002B	N1	Y62	44.00	46.00	2.00	2.00	5.67	0.87	6.54
Y62-23-PP-003	N1	Y62	42.00	50.00	8.00	8.00	6.81	0.63	7.44
Y68-23-PP-001	N1	Y68	18.00	19.00	1.00	1.00	2.03	0.06	2.09
Y68-23-PP-001	N1	Y68	44.00	45.00	1.00	1.00	1.48	0.52	2.00
Y68-23-PP-003	N1	Y68	38.00	39.10	1.10	1.10	2.65	0.06	2.71
Y68-23-PP-003	N1	Y68	45.00	46.00	1.00	1.00	3.66	0.40	4.06
Y68-23-PP-003	N1	Y68	48.00	49.00	1.00	1.00	1.70	0.32	2.01
Y68-23-PP-003	N1	Y68	51.00	52.00	1.00	1.00	2.10	0.15	2.25
Y68-23-PP-006	N1	Y68	47.00	49.00	2.00	2.00	2.17	1.13	3.29
November 13, 2023									
Press Release									
J68-23-PP-002	C1	J68	60.00	61.00	1.00	1.00	2.65	0.26	2.91
J68-23-PP-006	C1	J68	24.00	27.00	3.00	3.00	3.13	0.90	4.03
and	C1	J68	33.00	35.00	2.00	2.00	2.41	0.33	2.73
J68-23-PP-007	C1	J68	18.00	20.00	2.00	2.00	2.17	0.60	2.77
and	C1	J68	42.50	44.00	1.50	1.50	3.00	0.11	3.11
K68-23-PP-001	C1	K68	56.00	66.00	10.00	9.99	7.20	0.73	7.93
K68-23-PP-002	C1	K68	59.00	62.00	3.00	2.99	1.39	1.33	2.71
and	C1	K68	66.00	67.00	1.00	1.00	2.01	1.84	3.85
K68-23-PP-003	C1	K68	51.00	52.00	1.00	1.00	6.69	0.51	7.20
and	C1	K68	61.00	65.00	4.00	4.00	3.01	0.20	3.20
K68-23-PP-004	C1	K68	62.00	63.00	1.00	1.00	5.06	1.79	6.86
and	C1	K68	65.00	66.00	1.00	1.00	3.70	0.12	3.82
K68-23-PP-006	C1	K68	59.00	65.00	6.00	5.99	2.23	1.15	3.37
K68-23-PP-007	C1	K68	59.00	64.00	5.00	4.99	4.55	0.15	4.69
K68-23-PP-008	C1	K68	61.00	63.00	2.00	2.00	4.24	0.85	5.09
K68-23-PP-009	C1	K68	60.00	66.00	6.00	5.99	11.37	0.54	11.91
K68-23-PP-010	C1	K68	56.50	57.00	0.50	0.50	1.79	1.03	2.83
K68-23-PP-011	C1	K68	64.00	67.00	3.00	3.00	6.70	0.67	7.38
K68-23-PP-014	C1	K68	60.00	65.00	5.00	4.99	5.92	0.98	6.91
K68-23-PP-017	C1	K68	58.00	62.00	4.00	3.99	1.57	1.77	3.34
K68-23-PP-018	C1	K68	57.00	65.00	8.00	7.98	5.13	0.73	5.86

OSISKO METALS INCORPORATED

Management's Discussion & Analysis

For the three-month period ended March 31, 2024

K68-23-PP-019	C1	K68	68.00	69.00	1.00	1.00	1.58	1.25	2.83
K68-23-PP-020	C1	K68	54.00	62.00	8.00	7.99	9.44	1.20	10.63
and	C1	K68	64.00	67.00	3.00	3.00	5.46	1.35	6.81
K68-23-PP-021	C1	K68	58.00	59.00	1.00	1.00	2.07	0.09	2.16
and	C1	K68	61.00	62.00	1.00	1.00	1.84	0.25	2.08
and	C1	K68	65.00	67.00	2.00	2.00	7.77	0.34	8.11
K68-23-PP-022	C1	K68	60.00	65.00	5.00	4.99	4.88	0.22	5.10
K68-23-PP-024	C1	K68	62.00	63.00	1.00	1.00	1.83	0.43	2.26
K68-23-PP-025	C1	K68	56.00	57.00	1.00	1.00	2.04	0.18	2.22
and	C1	K68	59.00	67.00	8.00	7.99	4.24	0.50	4.74
K68-23-PP-026	C1	K68	57.00	63.00	6.00	5.99	4.17	1.20	5.37
K68-23-PP-026	C1	K68	67.00	71.00	4.00	3.99	6.86	0.43	7.29
K68-23-PP-028	C1	K68	54.00	58.00	4.00	3.99	10.11	0.92	11.03
and	C1	K68	60.00	62.00	2.00	2.00	2.01	0.17	2.19
K68-23-PP-029	C1	K68	65.00	66.00	1.00	1.00	2.66	0.08	2.74
K68-23-PP-030	C1	K68	50.00	60.00	10.00	9.99	5.20	3.50	8.71
and	C1	K68	62.00	64.00	2.00	2.00	5.64	0.32	5.96
K68-23-PP-031	C1	K68	57.00	58.00	1.00	1.00	1.98	0.34	2.32
K68-23-PP-033	C1	K68	66.00	70.00	4.00	3.99	2.31	1.43	3.74
K68-23-PP-034	C1	K68	64.00	65.00	1.00	1.00	5.45	0.46	5.91
K68-23-PP-035	C1	K68	52.00	59.00	7.00	6.99	3.71	0.45	4.16
K68-23-PP-038	C1	K68	53.00	56.00	3.00	3.00	4.31	7.27	11.59
K68-23-PP-039	C1	K68	61.00	62.00	1.00	1.00	4.58	2.37	6.95
K68-23-PP-040	C1	K68	53.00	54.00	1.00	1.00	2.21	0.37	2.58
K68-23-PP-041	C1	K68	48.00	52.00	4.00	4.00	3.27	0.22	3.49
and	C1	K68	56.00	61.00	5.00	5.00	3.84	0.71	4.55
K68-23-PP-042	C1	K68	56.00	57.00	1.00	1.00	1.93	0.53	2.46
and	C1	K68	63.56	65.00	1.44	1.44	3.17	0.46	3.63
K68-23-PP-044B	C1	K68	57.00	59.00	2.00	2.00	1.95	0.57	2.52
and	C1	K68	61.00	62.00	1.00	1.00	2.10	0.02	2.12
K68-23-PP-045	C1	K68	59.00	60.00	1.00	1.00	1.94	0.33	2.27
K68-23-PP-046	C1	K68	59.00	61.00	2.00	1.99	4.13	0.06	4.19
and	C1	K68	67.00	68.00	1.00	1.00	3.30	0.19	3.49
K68-23-PP-048	C1	K68	58.00	59.00	1.00	1.00	1.93	0.13	2.05
and	C1	K68	63.00	65.00	2.00	2.00	3.33	0.04	3.37
K68-23-PP-049	C1	K68	59.00	60.00	1.00	1.00	1.94	0.64	2.58
K68-23-PP-050	C1	K68	51.00	54.00	3.00	3.00	1.55	0.41	1.96
K68-23-PP-052	C1	K68	59.00	60.00	1.00	1.00	7.10	0.69	7.79
K68-23-PP-053	C1	K68	59.00	60.00	1.00	1.00	2.22	0.03	2.25
K68-23-PP-054	C1	K68	57.15	60.00	2.85	2.85	4.99	0.30	5.29
and	C1	K68	62.00	64.00	2.00	2.00	9.69	7.69	17.37
K68-23-PP-055	C1	K68	61.00	66.00	5.00	4.99	3.93	0.22	4.15
K68-23-PP-056	C1	K68	61.00	66.00	5.00	4.99	14.92	4.31	19.23
K68-23-PP-057	C1	K68	66.00	69.00	3.00	2.99	17.18	19.71	36.89
K68-23-PP-058	C1	K68	64.00	68.00	4.00	3.99	8.90	1.76	10.66
K68-23-PP-060	C1	K68	53.00	54.00	1.00	1.00	1.95	0.06	2.00
and	C1	K68	56.00	61.00	5.00	5.00	2.69	0.61	3.30
K68-23-PP-061	C1	K68	63.00	64.00	1.00	1.00	3.02	1.50	4.52
K68-23-PP-062	C1	K68	62.00	63.00	1.00	1.00	3.68	1.08	4.75
K68-23-PP-063	C1	K68	59.00	67.00	8.00	7.98	4.31	0.37	4.68

OSISKO METALS INCORPORATED

Management's Discussion & Analysis

For the three-month period ended March 31, 2024

K68-23-PP-063B	C1	K68	60.00	68.00	8.00	7.99	3.53	0.52	4.06
K68-23-PP-064	C1	K68	57.00	58.00	1.00	1.00	3.19	0.06	3.25
and	C1	K68	63.00	68.00	5.00	4.99	10.84	1.43	12.27
K68-23-PP-064B	C1	K68	63.00	70.00	7.00	6.99	9.97	4.49	14.45
K68-23-PP-065	C1	K68	54.00	65.00	11.00	10.99	4.96	0.71	5.67
K68-23-PP-066	C1	K68	61.00	65.00	4.00	3.99	6.13	0.22	6.36
K68-23-PP-068	C1	K68	62.00	67.00	5.00	4.99	5.53	1.43	6.97
K68-23-PP-069	C1	K68	59.00	66.00	7.00	6.99	5.36	0.48	5.85
and	C1	K68	68.00	70.00	2.00	2.00	3.53	0.35	3.88
K68-23-PP-070	C1	K68	56.00	59.00	3.00	2.99	3.92	0.09	4.01
and	C1	K68	62.00	64.00	2.00	2.00	3.97	0.33	4.31
K68-23-PP-071	C1	K68	64.00	65.00	1.00	1.00	1.78	0.23	2.01
K68-23-PP-072	C1	K68	59.00	62.00	3.00	3.00	5.41	1.74	7.15
K68-23-PP-073	C1	K68	56.00	61.00	5.00	5.00	5.84	2.06	7.90
October 12, 2023									
Press Release									
L65-23-PP-001	C1	L65	65.00	68.00	3.00	3.00	5.63	3.52	9.14
L65-23-PP-002	C1	L65	66.00	68.00	2.00	2.00	1.81	1.62	3.43
L65-23-PP-003A	C1	L65	60.00	72.00	12.00	11.97	5.31	1.23	6.54
L65-23-PP-004	C1	L65	66.00	68.00	2.00	2.00	5.49	0.33	5.82
L65-23-PP-005	C1	L65	63.00	64.00	1.00	1.00	6.61	5.15	11.76
L65-23-PP-006	C1	L65	66.00	66.70	0.70	0.70	8.06	0.06	8.12
L65-23-PP-008	C1	L65	57.00	58.00	1.00	1.00	2.47	0.86	3.33
L65-23-PP-009	C1	L65	59.00	65.00	6.00	5.99	2.23	0.24	2.46
L65-23-PP-010	C1	L65	67.00	68.00	1.00	1.00	1.86	0.47	2.32
L65-23-PP-011	C1	L65	65.00	67.00	2.00	1.99	3.73	2.34	6.08
L65-23-PP-012	C1	L65	55.00	57.00	2.00	2.00	2.74	0.56	3.29
L65-23-PP-013	C1	L65	58.00	59.00	1.00	1.00	1.59	1.08	2.67
and	C1	L65	63.00	65.00	2.00	2.00	17.39	3.19	20.58
L65-23-PP-014	C1	L65	55.00	56.00	1.00	1.00	2.58	2.31	4.89
L65-23-PP-015	C1	L65	51.00	52.00	1.00	1.00	8.06	0.01	8.07
L65-23-PP-016	C1	L65	62.00	65.00	3.00	2.99	5.65	1.87	7.52
and	C1	L65	67.00	68.00	1.00	1.00	0.25	2.39	2.64
L65-23-PP-017	C1	L65	66.00	69.00	3.00	3.00	6.94	0.74	7.68
L65-23-PP-019	C1	L65	62.00	63.00	1.00	1.00	0.63	1.44	2.06
and	C1	L65	65.00	67.00	2.00	2.00	2.25	3.23	5.48
L65-23-PP-020	C1	L65	64.00	68.00	4.00	3.99	3.38	2.07	5.45
L65-23-PP-021	C1	L65	64.00	67.00	3.00	3.00	2.50	2.16	4.65
and	C1	L65	69.00	73.00	4.00	3.99	3.60	0.98	4.58
L65-23-PP-022	C1	L65	68.00	74.00	6.00	5.99	8.73	1.57	10.30
L65-23-PP-023	C1	L65	64.00	65.00	1.00	1.00	2.30	1.17	3.47
and	C1	L65	68.00	69.00	1.00	1.00	3.02	2.41	5.43
L65-23-PP-024	C1	L65	59.00	65.00	6.00	5.99	4.36	1.24	5.61
L65-23-PP-025	C1	L65	59.00	62.00	3.00	2.99	6.00	15.25	21.25
L65-23-PP-027	C1	L65	58.00	63.00	5.00	4.99	1.77	0.78	2.56
L65-23-PP-029	C1	L65	58.80	59.50	0.70	0.70	3.56	7.74	11.30
L65-23-PP-030	C1	L65	63.00	64.00	1.00	1.00	6.58	0.16	6.74
L65-23-PP-032	C1	L65	52.00	54.00	2.00	2.00	3.94	0.05	3.99
and	C1	L65	59.00	62.00	3.00	2.99	3.02	1.64	4.66
L65-23-PP-033	C1	L65	62.00	66.00	4.00	3.99	5.78	1.70	7.48
L65-23-PP-034	C1	L65	67.00	70.00	3.00	3.00	3.30	1.47	4.77
and	C1	L65	72.00	73.00	1.00	1.00	8.26	3.77	12.03
L65-23-PP-035	C1	L65	63.00	67.00	4.00	3.99	1.87	2.10	3.97

OSISKO METALS INCORPORATED

Management's Discussion & Analysis

For the three-month period ended March 31, 2024

L65-23-PP-036	C1	L65	59.00	60.00	1.00	1.00	4.77	0.08	4.85
and	C1	L65	62.00	66.00	4.00	3.99	7.70	2.07	9.77
and	C1	L65	70.00	72.00	2.00	2.00	5.85	1.52	7.37
L65-23-PP-037	C1	L65	61.00	63.00	2.00	1.99	11.31	2.51	13.82
and	C1	L65	65.00	66.00	1.00	1.00	7.99	0.08	8.07
L65-23-PP-038	C1	L65	57.00	59.00	2.00	2.00	11.54	2.75	14.29
L65-23-PP-041	C1	L65	62.00	67.00	5.00	4.99	5.83	2.82	8.64
and	C1	L65	72.00	73.00	1.00	1.00	2.26	0.07	2.33
L65-23-PP-042	C1	L65	76.00	80.00	4.00	3.99	5.90	1.04	6.94
and	C1	L65	82.00	84.00	2.00	1.99	0.83	1.79	2.62
L65-23-PP-049	C1	L65	81.00	82.00	1.00	1.00	3.12	0.46	3.58
L65-23-PP-050	C1	L65	74.00	77.00	3.00	3.00	6.49	2.38	8.87
and	C1	L65	81.00	87.00	6.00	5.99	9.52	1.46	10.99
L65-23-PP-051	C1	L65	67.00	78.00	11.00	10.96	3.64	2.44	6.07
and	C1	L65	82.00	83.00	1.00	1.00	0.18	3.16	3.34
L65-23-PP-052	C1	L65	66.00	67.50	1.50	1.50	28.06	4.24	32.30
and	C1	L65	70.00	71.00	1.00	1.00	3.77	0.09	3.86
L65-23-PP-053	C1	L65	68.00	71.00	3.00	3.00	4.26	0.86	5.11
L65-23-PP-056	C1	L65	68.00	69.00	1.00	1.00	3.53	0.76	4.29
L65-23-PP-057	C1	L65	64.50	68.00	3.50	3.50	3.75	3.45	7.20
and	C1	L65	71.00	75.00	4.00	4.00	6.32	0.69	7.01
L65-23-PP-058	C1	L65	65.00	67.00	2.00	2.00	1.75	0.58	2.33
L65-23-PP-059	C1	L65	55.00	56.00	1.00	1.00	2.38	1.50	3.88
L65-23-PP-060	C1	L65	56.00	57.00	1.00	1.00	1.40	0.63	2.02
L65-23-PP-062	C1	L65	52.00	56.00	4.00	4.00	10.10	7.00	17.10
L65-23-PP-063	C1	L65	67.00	68.00	1.00	1.00	6.36	1.79	8.15
and	C1	L65	70.00	72.00	2.00	2.00	2.85	2.91	5.76
M62-23-PP-001	C1	M62	63.00	65.00	2.00	2.00	9.66	4.68	14.34
M62-23-PP-003	C1	M62	53.60	54.60	1.00	1.00	21.70	12.90	34.60
and	C1	M62	57.00	58.00	1.00	1.00	3.61	0.13	3.74
M62-23-PP-004	C1	M62	53.00	54.00	1.00	1.00	10.65	26.13	36.78
M62-23-PP-006B	C1	M62	56.00	58.00	2.00	2.00	2.55	0.71	3.26
and	C1	M62	61.00	62.00	1.00	1.00	4.57	0.42	4.99
M62-23-PP-007B	C1	M62	57.00	58.00	1.00	1.00	5.22	0.61	5.83
M62-23-PP-008B	C1	M62	57.00	58.00	1.00	1.00	12.85	0.94	13.79
M62-23-PP-009	C1	M62	59.00	61.00	2.00	2.00	6.68	1.97	8.65
M62-23-PP-010	C1	M62	59.00	60.00	1.00	1.00	5.28	0.01	5.29
M62-23-PP-011	C1	M62	58.00	62.00	4.00	3.99	7.00	1.82	8.81
and	C1	M62	65.00	67.00	2.00	2.00	4.35	0.30	4.65
M62-23-PP-012	C1	M62	59.50	65.00	5.50	5.50	9.52	2.89	12.40
M62-23-PP-013	C1	M62	65.00	72.00	7.00	6.99	4.23	0.06	4.29
M62-23-PP-014B	C1	M62	75.00	77.00	2.00	2.00	6.29	0.75	7.04
M62-23-PP-015	C1	M62	60.00	67.00	7.00	6.99	5.76	0.62	6.38
and	C1	M62	69.00	77.00	8.00	7.99	7.44	0.01	7.46
M62-23-PP-016	C1	M62	65.00	68.00	3.00	3.00	9.79	0.02	9.81
M62-23-PP-017	C1	M62	63.00	67.00	4.00	3.99	18.72	0.19	18.91
M62-23-PP-018	C1	M62	63.00	67.00	4.00	3.99	24.06	5.40	29.46
and	C1	M62	81.00	84.00	3.00	3.00	8.99	1.17	10.17
M62-23-PP-020	C1	M62	60.00	63.00	3.00	3.00	5.95	0.45	6.40
M67-23-PP-001	C1	M67	53.00	57.50	4.50	4.50	3.42	0.01	3.42
and	C1	M67	62.00	63.00	1.00	1.00	3.78	1.16	4.93
M67-23-PP-002	C1	M67	52.75	55.00	2.25	2.25	3.46	0.00	3.47
and	C1	M67	61.00	71.00	10.00	9.98	8.78	1.18	9.96
M67-23-PP-003	C1	M67	64.00	67.00	3.00	2.99	3.11	1.68	4.79

OSISKO METALS INCORPORATED

Management's Discussion & Analysis

For the three-month period ended March 31, 2024

and	C1	M67	70.00	71.40	1.40	1.40	0.91	1.16	2.07
and	C1	M67	73.00	74.00	1.00	1.00	4.03	0.15	4.18
M67-23-PP-004	C1	M67	61.00	68.00	7.00	6.98	14.25	3.37	17.62
M67-23-PP-005	C1	M67	63.00	64.00	1.00	1.00	7.19	1.83	9.02
and	C1	M67	75.00	76.00	1.00	1.00	3.66	0.58	4.24
M67-23-PP-007	C1	M67	63.00	67.00	4.00	3.99	2.90	1.27	4.16
and	C1	M67	70.80	72.00	1.20	1.20	15.25	2.52	17.77
M67-23-PP-008	C1	M67	74.00	75.00	1.00	1.00	1.91	0.22	2.13
M67-23-PP-011	C1	M67	69.00	71.00	2.00	2.00	6.18	0.33	6.51
M67-23-PP-013	C1	M67	60.00	73.00	13.00	12.96	11.11	1.44	12.55
M67-23-PP-014	C1	M67	69.00	72.00	3.00	3.00	6.76	4.00	10.76
M67-23-PP-015	C1	M67	63.00	75.00	12.00	11.97	11.92	4.91	16.83
M67-23-PP-017	C1	M67	70.00	73.00	3.00	3.00	4.18	5.66	9.84
M67-23-PP-018	C1	M67	72.00	74.00	2.00	2.00	8.21	0.30	8.51
M67-23-PP-019	C1	M67	72.00	76.00	4.00	4.00	1.40	1.22	2.62
M67-23-PP-020	C1	M67	71.00	74.00	3.00	2.99	4.18	1.00	5.18
M67-23-PP-021	C1	M67	69.00	73.00	4.00	4.00	7.53	3.53	11.06
and	C1	M67	78.00	82.00	4.00	4.00	8.07	15.55	23.62
M67-23-PP-022	C1	M67	69.00	74.35	5.35	5.33	4.83	0.89	5.72
and	C1	M67	76.00	77.00	1.00	1.00	13.95	10.70	24.65
M67-23-PP-023	C1	M67	67.00	73.00	6.00	5.98	8.31	0.56	8.87
M67-23-PP-024	C1	M67	65.30	70.00	4.70	4.70	20.53	1.25	21.78
M67-23-PP-025	C1	M67	71.00	72.00	1.00	1.00	0.15	1.96	2.10
M67-23-PP-026	C1	M67	75.00	76.00	1.00	1.00	1.95	0.58	2.53
M67-23-PP-027	C1	M67	55.00	58.00	3.00	2.99	2.81	0.03	2.84
and	C1	M67	61.00	69.00	8.00	7.96	9.16	3.92	13.08
M67-23-PP-028	C1	M67	59.00	60.00	1.00	1.00	1.25	0.77	2.02
and	C1	M67	63.00	66.00	3.00	3.00	4.28	0.21	4.49
M67-23-PP-029	C1	M67	63.00	66.00	3.00	2.99	2.10	1.32	3.41
M67-23-PP-030	C1	M67	61.00	66.00	5.00	4.99	5.20	4.48	9.68
September 28, 2023									
Press Release									
P499-23-PP-001	W1	P499	107.70	111.00	3.30	3.30	2.40	1.14	3.54
and	W1	P499	154.00	157.00	3.00	3.00	3.20	0.68	3.88
P499-23-PP-002	W1	P499	82.00	86.00	4.00	4.00	6.01	2.15	8.16
and	W1	P499	98.00	119.00	21.00	21.00	5.71	1.51	7.22
and	W1	P499	126.00	130.00	4.00	4.00	12.03	4.22	16.25
P499-23-PP-003	W1	P499	96.00	107.00	11.00	11.00	6.13	1.75	7.88
P499-23-PP-004	W1	P499	81.00	106.00	25.00	25.00	5.62	4.57	10.19
and	W1	P499	125.00	127.00	2.00	2.00	8.40	0.04	8.44
and	W1	P499	150.00	152.00	2.00	2.00	0.43	3.78	4.21
O556-23-PP-001	W1	O556	161.00	163.00	2.00	2.00	4.55	0.12	4.67
O556-23-PP-003	W1	O556	146.00	151.00	5.00	5.00	0.71	1.89	2.60
and	W1	O556	154.00	165.00	11.00	11.00	4.03	1.34	5.37
and	W1	O556	168.00	174.00	6.00	6.00	2.27	0.59	2.86
O556-23-PP-004	W1	O556	153.00	155.00	2.00	2.00	9.15	1.33	10.48
and	W1	O556	180.00	181.00	1.00	1.00	10.95	7.36	18.31
O556-23-PP-005	W1	O556	123.00	126.00	3.00	3.00	3.46	0.18	3.64
and	W1	O556	133.00	161.00	28.00	28.00	10.91	8.03	18.94
and	W1	O556	179.00	181.60	2.60	2.60	2.34	2.92	5.26
O556-23-PP-006	W1	O556	111.00	114.00	3.00	3.00	4.48	1.21	5.69
and	W1	O556	151.00	159.00	8.00	8.00	2.30	1.66	3.96
O556-23-PP-007	W1	O556	109.00	110.00	1.00	1.00	2.94	1.00	3.94

OSISKO METALS INCORPORATED

Management's Discussion & Analysis

For the three-month period ended March 31, 2024

O556-23-PP-008	W1	O556	114.30	126.00	11.70	11.70	5.72	1.89	7.61
and	W1	O556	147.00	157.00	10.00	10.00	3.44	1.46	4.90
O556-23-PP-009	W1	O556	111.00	146.00	35.00	35.00	6.20	5.44	11.64
and	W1	O556	149.00	154.00	5.00	5.00	5.52	3.90	9.42
September 5, 2023									
Press Release									
X25-23-PP-001	W1	X25	161.00	174.00	13.00	12.99	2.62	0.30	2.92
and	W1	X25	180.00	181.00	1.00	1.00	2.66	0.39	3.05
and	W1	X25	186.00	187.50	1.50	1.50	9.17	1.91	11.08
X25-23-PP-002B	W1	X25	161.00	174.00	13.00	12.98	8.41	4.00	12.40
X25-23-PP-003	W1	X25	157.00	171.00	14.00	14.00	8.21	5.30	13.51
and	W1	X25	180.00	183.00	3.00	3.00	2.03	0.52	2.55
X25-23-PP-004	W1	X25	162.00	195.00	33.00	33.00	11.26	2.71	13.97
X25-23-PP-005	W1	X25	103.00	104.00	1.00	1.00	1.93	0.60	2.52
and	W1	X25	134.00	135.00	1.00	1.00	1.71	0.58	2.29
and	W1	X25	140.00	145.00	5.00	4.99	15.94	2.66	18.60
and	W1	X25	147.00	156.00	9.00	8.99	9.28	6.53	15.80
and	W1	X25	159.00	163.00	4.00	3.99	7.13	0.49	7.62
X25-23-PP-007	W1	X25	67.95	68.45	0.50	0.50	8.42	2.16	10.58
X25-23-PP-010	W1	X25	123.00	124.00	1.00	1.00	2.87	0.55	3.42
and	W1	X25	134.00	139.00	5.00	4.99	3.90	0.22	4.12
X25-23-PP-011	W1	X25	132.00	135.00	3.00	3.00	2.55	1.02	3.58
and	W1	X25	138.00	141.00	3.00	3.00	4.00	0.29	4.30
X25-23-PP-012	W1	X25	112.00	113.00	1.00	1.00	3.36	0.78	4.14
and	W1	X25	132.00	135.00	3.00	3.00	2.62	0.65	3.27
and	W1	X25	138.00	139.50	1.50	1.50	2.44	0.59	3.03
X25-23-PP-013	W1	X25	116.00	122.00	6.00	5.99	2.51	7.38	9.88
and	W1	X25	125.00	126.00	1.00	1.00	7.52	0.74	8.26
and	W1	X25	133.00	140.00	7.00	6.99	2.12	0.14	2.26
X25-23-PP-015	W1	X25	113.00	115.00	2.00	2.00	2.00	0.68	2.68
and	W1	X25	121.00	122.00	1.00	1.00	3.02	2.43	5.45
and	W1	X25	124.00	132.00	8.00	7.99	4.20	1.19	5.40
X25-23-PP-016	W1	X25	126.00	133.00	7.00	6.99	6.58	0.48	7.06
and	W1	X25	138.00	140.00	2.00	2.00	4.09	0.01	4.10
X25-23-PP-018	W1	X25	131.00	133.00	2.00	1.99	9.04	1.47	10.51
X25-23-PP-019	W1	X25	55.00	59.00	4.00	4.00	1.83	0.79	2.62
and	W1	X25	96.00	100.00	4.00	4.00	5.92	3.68	9.60
and	W1	X25	104.00	105.00	1.00	1.00	7.47	0.82	8.29
and	W1	X25	107.00	108.00	1.00	1.00	1.79	0.59	2.38
and	W1	X25	117.00	118.00	1.00	1.00	3.11	0.24	3.35
and	W1	X25	120.00	125.00	5.00	4.99	4.29	0.96	5.25
and	W1	X25	127.00	128.00	1.00	1.00	2.03	0.60	2.63
X25-23-PP-020	W1	X25	104.00	105.00	1.00	1.00	5.36	2.07	7.43
X25-23-PP-021	W1	X25	133.00	137.00	4.00	3.99	3.61	1.65	5.26
X25-23-PP-022	W1	X25	124.00	125.00	1.00	1.00	1.97	0.73	2.69
and	W1	X25	140.00	141.00	1.00	1.00	3.36	0.02	3.38
X25-23-PP-023	W1	X25	123.00	127.00	4.00	3.99	1.63	0.55	2.18
and	W1	X25	129.00	130.00	1.00	1.00	1.59	0.57	2.17
and	W1	X25	132.00	133.00	1.00	1.00	2.10	1.05	3.15
X25-23-PP-024	W1	X25	115.00	116.00	1.00	1.00	1.58	0.46	2.04
and	W1	X25	135.00	138.00	3.00	2.99	16.40	1.04	17.44
X25-23-PP-025	W1	X25	115.00	116.00	1.00	1.00	6.72	0.82	7.54
and	W1	X25	125.00	126.00	1.00	1.00	1.74	0.35	2.09
X25-23-PP-026	W1	X25	95.00	100.00	5.00	5.00	4.25	1.49	5.74
and	W1	X25	119.00	126.00	7.00	7.00	6.17	0.89	7.06
X25-23-PP-028	W1	X25	118.00	129.00	11.00	10.96	5.84	0.75	6.58
and	W1	X25	132.00	135.00	3.00	2.99	9.39	1.10	10.50

OSISKO METALS INCORPORATED

Management's Discussion & Analysis

For the three-month period ended March 31, 2024

X25-23-PP-029	W1	X25	122.00	123.00	1.00	1.00	3.24	1.24	4.47
X25-23-PP-030	W1	X25	117.00	118.00	1.00	1.00	2.18	0.38	2.56
and	W1	X25	120.00	122.00	2.00	2.00	3.81	0.47	4.28
and	W1	X25	126.00	132.00	6.00	5.99	6.01	1.46	7.47
and	W1	X25	138.00	141.00	3.00	3.00	4.77	0.28	5.06
X25-23-PP-031	W1	X25	110.00	118.50	8.50	8.48	2.90	0.18	3.08
and	W1	X25	122.00	124.00	2.00	2.00	3.11	0.55	3.66
and	W1	X25	132.00	133.50	1.50	1.50	1.73	0.29	2.02
and	W1	X25	137.00	138.00	1.00	1.00	2.95	0.61	3.56
and	W1	X25	142.50	146.00	3.50	3.49	11.02	0.22	11.25
X25-23-PP-032	W1	X25	107.00	108.00	1.00	1.00	0.00	2.23	2.23
and	W1	X25	116.00	118.00	2.00	2.00	1.39	3.40	4.79
and	W1	X25	120.00	132.00	12.00	11.99	3.23	1.92	5.15
X25-23-PP-033	W1	X25	126.00	129.00	3.00	2.99	2.27	7.78	10.05
and	W1	X25	138.00	141.00	3.00	2.99	10.35	2.19	12.54
X25-23-PP-034	W1	X25	137.00	144.00	7.00	6.98	21.09	3.24	24.33
and	W1	X25	148.00	149.00	1.00	1.00	3.04	0.19	3.23
X25-23-PP-037	W1	X25	132.00	133.00	1.00	1.00	25.90	5.15	31.05
and	W1	X25	136.00	139.00	3.00	2.99	8.26	1.12	9.38
X25-23-PP-038	W1	X25	135.00	144.00	9.00	8.98	11.42	1.79	13.21
X25-23-PP-039	W1	X25	133.00	141.00	8.00	7.98	24.84	5.36	30.20
X25-23-PP-040	W1	X25	138.00	142.00	4.00	3.99	19.39	3.03	22.41
X25-23-PP-041	W1	X25	138.00	140.00	2.00	2.00	12.85	0.77	13.62

Permits

PPML was recently issued with a new Land Use Permit and new Water Licence for the Confirmation and Exploration Program at the Pine Point Project site. All of the previously permitted activities will be conducted under this new permit and license. The new permit and licence have a larger scope of work: expanded exploration and delineation drill program plus the addition of groundwater/hydrology pump tests, collection of samples for geotechnical analysis, collection of additional samples of mineralization for metallurgical tests, expansion of the exploration camp and increased the fuel storage at site. The new permits were granted in late July 2022 and replaced previous permits.

Pine Point 2022 PEA

On July 13, 2022, the Company released the results of the Pine Point Project's updated Preliminary Economic Assessment (the "2022 PEA"), which was filed on August 29, 2022. The objective of the 2022 PEA was to integrate updated long-term prices for zinc and lead, increased mined resources, cost escalations in CAPEX and OPEX as well as reduced life-of-mine water management costs that resulted from the recently completed hydrogeological model. Highlights from the 2022 PEA include:

After-Tax Internal Rate of Return ("IRR")	25%
After-Tax Net Present Value ("NPV") (Discount Rate 8%)	\$602M
After-Tax Payback Period (Years)	3.8
Pre-Production CAPEX (including \$106.6M Contingency)	\$653M
Average Annual life of mine ("LOM") Production Zinc	329Mlb
Average Annual LOM Production Lead	141Mlb
Life of Mine	12 Years
Total Mineral Resources Mined	46.9Mt
Average ZnEq Diluted (12%) Grade of Mineral Resources Mined	6.1%
Gross Revenue After Royalty (LOM)	\$5,625M
After-tax Operating Cash Flow (LOM)	\$1,279M
C1 Costs over LOM (ZnEq)*	US\$0.61/lb
All-In Costs (including sustaining CAPEX, ZnEq)**	US\$0.80/lb
LOM Zinc Price	US\$1.37/lb
LOM Lead Price	US\$0.97/lb
Foreign Exchange ("FX") rate (CAD:USD)	1.27

* C1 cost includes mine site cost plus smelting, transport and royalty

** All-in costs are C1 plus sustaining CAPEX

Hydrogeology Highlights:

- Initial use of a hydrogeological Site Wide Numerical Model ("SWNM") for the Pine Point Project, providing insight into dewatering requirements.
- The new Cluster mining strategy in combination with the hydrogeological modelling reduced dewatering estimations by 30% on an annual basis for various key operating and sustaining capital expenditures directly associated with dewatering when compared to mining the open pits individually.
- Current data suggests that there is potential for an additional reduction of up to 15% beyond the current simulation estimates.
- Ongoing modelling will further optimize the LOM plan strategy to pump less water, use less energy, and continue to reduce dewatering costs. This also means reduced natural gas ("NG") generated power requirements, and less greenhouse gas emissions for a smaller footprint.
- Further optimization of the SWNM and the LOM plan will be a main objective of the Pine Point Project's feasibility study.

Pine Point Project updated Mineral Resource Estimate (the "2022 MRE") Highlights:

- Indicated Mineral Resource: 15.8Mt grading 4.17% Zn and 1.53% Pb representing approximately 25% of the declared tonnage in the 2022 MRE.
- Inferred Mineral Resource: 47.2Mt grading 4.43% Zn and 1.68% Pb.
- Indicated and Inferred Mineral Resource tonnages increased by 22% and 26%, respectively.
- The differences in tonnage/grade between the 2020 and 2022 MRE are attributable to parameter changes used for the pit shells and the cut-off grade calculation.
- The feasibility study is expected to include drilling from 2019 until the end of the infill to indicated drill campaign which was completed in the second quarter of 2023. This will upgrade the Inferred Resources to the Indicated category for the feasibility study Mineral Resource Estimate.

Table 10: LOM Capital Cost Summary

Cost Area	Pre-Production Capital Costs (\$M)	Sustaining Capital Costs (\$M)	Total Capital Costs (\$M)
General Administration (Owner's costs)	22.8	0.0	22.8
Underground Mine	0.0	118.3	118.3
Open-pit Mine	15.7	80.6	96.3
Electricity and Communications	45.7	19.3	64.9
Site Infrastructure	59.7	11.8	71.5
Process Plant	297.3	0.0	297.3
Tailings, Mine Waste and Water Management	47.7	123.6	171.3
Indirect Costs	76.6	0.0	76.6
Contingency	87.8	18.8	106.6
Capitalized Operating Costs	0.0	174.5	174.5
Total	653.3	546.8	1,200.1
Site Reclamation and Closure	0.0	68.0	68.0
Salvage Value	0.0	-19.6	-19.6
Total - Forecast to spend	653.3	595.2	1,248.5

Table 11: Operating Costs

Mining Costs (per)		
Surface*	\$/Tonne Mined	\$3.36
Underground - West Zone**	\$/Tonne Mined	\$40.01
Underground - Central Zone**	\$/Tonne Mined	\$52.07
Processing Costs	\$/Tonne Milled	\$12.27
Power Operating Cost	\$/Tonne Milled	\$4.61
Waste rock, Tailings and Water Management Costs***	\$/Tonne Milled	\$1.63
G&A Costs	\$/Tonne Milled	\$8.11

* LOM Average and inclusive of ore, overburden and waste rock

** Inclusive of transport to the mill

*** In the 2020 PEA these costs were included in mining and processing costs.

OSISKO METALS INCORPORATED

Management's Discussion & Analysis

For the three-month period ended March 31, 2024

Sensitivity

The Pine Point Project is expected to be a robust, profitable operation at a variety of prices and assumptions. Metal prices used in the 2022 PEA are based on weighted two-year moving averages, hence \$1.37/lb zinc and \$0.97/lb lead.

Under more bullish scenarios, especially when considering record low inventory levels and continued lack of investment in the mining industry, the Pine Point Project demonstrates even stronger economic returns and is well-positioned to benefit from a higher long-term zinc price. At US\$1.50/lb zinc, \$1.00/lb lead and FX rate of 1.25, the Pine Point Project returns an NPV of \$787M with an IRR of 29% on an after-tax basis.

A lower commodity pricing scenario was also modeled using US\$1.30/lb zinc, \$0.95/lb lead and FX 1.29. At these lower prices, the Pine Point Project would still generate a NPV of \$526M and IRR of 23% on an after-tax basis.

Hydrogeological Modelling

The current dewatering plan was updated for the 2022 PEA by Hydro-Ressources Inc ("HRI") using the FeFlow V7 software. This is an important step in the process of better estimating dewatering volumes as it utilizes the Pine Point Project's 3D Geological model and GIS Database and is corroborated with Profile Tracer Tests ("PTT") in 23 holes that were tested until the cutoff date of December 2021. Additional testing is ongoing and will be used to calibrate future simulations.

For the North, Central and East Mill Zones (see Figures 3 and 4), open pit mines were grouped into clusters measuring 3 km long and 1 km wide. Generally, pits located within a cluster are mined in sequence to reduce dewatering requirements. Lowering the water table within the deepest pit within a cluster would potentially reduce water management at that time for surrounding pits. Utilizing this type of dewatering strategy will help to optimize overall pumping rates and power requirements.

To reduce water management in underground mines in the West Zone, grouting was selected as the preferred water inflow restriction methodology. Discussions with experts and previous employees of the Pine Point Mine during the Cominco era benefitted the analysis and grouting (till injection) was chosen as the preferred method to reduce water inflow.

Using contemporaneous measurement systems, and dewatering management techniques PPML will continue to optimize mine sequencing, and the overall LOM plan to better manage water. One strategy being used is to evaluate if dewatering the deepest pit within a Cluster area reduces the dewatering of adjacent open pits. The ultimate objective is to focus on each Cluster to maximize mining efficiency and reduce dewatering volumes to manage. This will help to focus on reducing production timelines per open pit and per Cluster, potentially further reducing dewatering volume estimates.

The strategic placement of water wells targeting structures and discontinuities will be an innovative approach never previously applied to the Pine Point Project.

Mining

In the 2022 PEA, the Pine Point Project LOM plan would still consist of simultaneously mining open pit deposits in the East Mill, Central, North and N204 Zones concurrent with underground operations in the West and Central Zones as in the 2020 PEA.

The overall schedule has changed using the Deswik software platform but the general strategy is the same with an average LOM production rate of 11,250 tonnes per day mined.

The open pit LOM plan is still proposing to mine 47 open pits and 9 underground deposits over a strike length of 50 km, mainly located above 125.0 m depth from surface. Most of the deposits are characterized by multiple shallow tabular panels dipping approximately 2-5 degrees towards the West.

The open pit mining method is essentially the same as in the 2020 PEA, incorporating 5 m benches in mineralized material, 10 m benches in waste with an overall open pit wall angle of 45 degrees. The mining fleet would include long-haul trucks with a payload of 90 tonnes. The production rate would vary between 8,000 tpd and 11,250 tpd. The strip ratio is lower due to the inclusion of more mineralization and is expected to average 5.6 to 1.

Underground operations would still use 45 tonne haul trucks with ramp access and would produce at a rate of 4,000 tpd in the West Zone and 2,000 tpd in the Central Zone. The mining methods used are a mixture of Long Hole Stopping (85%) combined with Room and Pillar (15%).

Processing and Smelting

The Pine Point Project's processing plant is still designed to treat up to 11,250 tpd Run of Mine material. The processing plant would consist of a three-stage crushing circuit as well as an XRT-based mineral sorting system that would reject approximately 40% waste material. The sorted concentrate would be blended with the primary crushing circuit fines to feed a ball mill (6,700 tpd) followed by conventional lead and zinc flotation circuits.

Overall zinc and lead recoveries, inclusive of material sorting, over the LOM, are expected to be approximately 87% and 93%, respectively. Flotation tailings would be thickened and pumped for disposal within mined out pits. The flotation concentrates would be filtered and trucked to Hay River for transloading into rail cars for shipment to smelters.

The Pine Point Project's zinc and lead concentrates are not encumbered by any offtake agreements. It is expected that this type of high-quality material would be sought after by most smelters. The forecasted future zinc supply will be dominated by concentrates with high impurities which will require blending with concentrates similar to that of Pine Point.

Table 12: Zinc Concentrate Trace Element Analysis

Element	Symbol	Unit	Reported Concentration	Typical Smelter Penalty Threshold
Antimony	Sb	ppm	Less than 0.5*	1,000
Bismuth	Bi	ppm	Less than 0.1*	1,000
Cadmium	Cd	ppm	864	4,000
Cobalt	Co	ppm	3	1,000
Copper + Lead	Cu + Pb	%	0.23	3
Fluorine	F	ppm	Less than 20*	300
Iron	Fe	%	2.6	8.0-9.0
Magnesium	MgO	%	0.36	0.35
Manganese	Mn	ppm	100	12,500
Mercury	Hg	ppm	0.31	50
Silica	SiO ₂	%	Less than 0.21*	3.5

The Pine Point Project's zinc concentrates are expected to be predominantly smelted in North America using long-term benchmark contract prices with positive adjustments to account for its high-quality. The remaining portion is expected to be sold into both the Asian spot and benchmark contract markets. Lead concentrates would be mainly sold into the Asian spot and benchmark contract markets with only a minor North American component.

Table 13: Processing Overview

Crushing and Pre-Concentration Circuit Throughput	11,250 tpd
Coarse Fraction	70%
Fine Fraction	30%
XRT Mass Recovery	42%
Total Mass Recovery (including crusher fines)	59%
Grinding and Flotation Circuit Throughput	6,700 tpd
XRT LOM Recoveries	
Zinc	93.4%
Lead	99.0%
Flotation LOM Recoveries	
Zinc	92.9%
Lead	94.1%
Overall LOM Recoveries	
Zinc	87.0%
Lead	92.9%

OSISKO METALS INCORPORATED

Management's Discussion & Analysis

For the three-month period ended March 31, 2024

Proposed Infrastructure Upgrades and Indirect Costs

The Pine Point Project is located 60 km east of the town of Hay River, on the south side of Great Slave Lake. Established infrastructure consists of an active power substation, paved GNWT highway access and 100 km of 25-metre-wide haul roads from the original Cominco era mining operation that provide access to all major deposit areas. Hay River is serviced by an airport and a paved road from Alberta and is also host to a railway head operated by CN.

The proposed project would be comprised of 55 mining sites (47 open pits and 8 underground deposits), one central concentrator plant site, and envisions the main electrical substation would feed 7 MW during the winter and 10 MW during the summer. The power requirements could be provided by the Northwest Territories Power Corporation ("NTPC") through the Taltson hydro-electric grid.

Additional power would be supplied by mobile NG-fueled generators that could be moved to various sites requiring power and minimizing the amount of transmission lines needed as several open pit mines have a mine life of less than three years. Further studies will aim to optimize the number and capacity of these NG power generation units.

Overburden stockpiles and waste rock stockpiles would be located nearby planned open pit mines where necessary and waste rock would also be deposited in former historical open pit mines. Overburden and waste rock would also be used for progressive reclamation where appropriate.

There would be no Tailings Management Facility as certain designated former open pits from the Cominco era and future proposed open pits are intended for tailings disposal and then the tailings would be covered by Pre-concentrator reject waste rock material and finally capped with coarser sterile waste rock.

Memorandum of Understanding

On October 13, 2022, the Company and the NTPC announced the signing of a Memorandum of Understanding ("MOU") outlining the process of negotiating future power supply from the Taltson hydroelectric grid and power purchase agreements.

The MOU will allow both parties to explore, discuss and establish mutually agreeable arrangements through which NTPC can supply and sell hydroelectric power and how Osisko Metals can purchase this electricity and any related services for use at the Pine Point Project site.

The MOU does not commit either party to a power connection agreement but does provide a framework to continue the informal discussion between NTPC and Osisko Metals that has been underway over the past several years.

The Pine Point Project would require additional power when production begins. The potential to access clean hydropower is an attractive opportunity that the PPML will want to explore further with NTPC. Osisko Metals' preference is to find ways to maximize the consumption of hydroelectric power, thereby reducing the Pine Point Project's carbon footprint and reducing operating costs.

Environment and Closure Plan

On February 4, 2021, the Company announced the submission of an Environmental Assessment Initiation Package to the Mackenzie Valley Review Board ("MVRB") which initiated the Environmental Assessment ("EA") process for the Pine Point Project. The MVRB released the Terms of Reference ("TOR") for the Developers Assessment Report on November 26, 2021. The TOR describes the areas of assessment to be included in the DAR, which will describe the environmental impacts of the project and the proposed mitigations to address the impacts. PPML is working with environmental consultants on the DAR development. Additional environmental baseline information has is being collected to meet the requirements of the TOR. Analysis of the baseline information will be undertaken during 2023. The results of engineering studies will also provide necessary inputs for the DAR during 2023-24.

A conceptual closure and rehabilitation estimate for the Pine Point Project has been developed by WSP for the 2022 PEA in accordance with MVRMA guidelines, the reclamation costs for which were estimated at \$68.0 million.

The Closure and Reclamation Plan will be updated through the EA and Regulatory Phase and this plan is subject to approval by the Mackenzie Valley Land and Water Board.

Stakeholder Engagement

PPML has taken a proactive approach toward engaging and working with local indigenous and non-indigenous communities that would be impacted by the Pine Point Project. Engagement with the communities was initiated in 2017 and has continued since, with limitations due to COVID-19, in 2020 and 2021.

Both the Indigenous and non-Indigenous communities have expressed strong support for the Pine Point Project, with the objective of applying best practice environmental management and maximizing the economic benefits for local communities – specifically with a focus on employment and entrepreneurial opportunities throughout the various phases of this project. PPML has begun initial discussions with indigenous governments to develop a framework for future impact benefit agreements.

The Pine Point Project will average approximately 395 workers during the construction period and approximately 450 employees, staff and labour will be required during operations.

2022 MRE Overview

All tonnages in Table 13 are rounded to the nearest thousand tonnes. ZnEq percentages are calculated using metal prices, forecasted metal recoveries, concentrate grades, transportation costs, smelter payable metals and charges. The pit constrained cut-off grade range is mostly due to the variable transportation distances from the mining zones to the presumed plant site location.

Table 14: 2022 MRE for Pine Point

Method	Zone	Cut-off Grade (ZnEq %)	Indicated				Inferred			
			Tonnage (kt)	ZnEq (%)	Pb (%)	Zn (%)	Tonnage (kt)	ZnEq (%)	Pb (%)	Zn (%)
Pit Constrained Mineral Resources	Central	1.25	2 424	6.36	1.47	5.04	4 373	6.58	1.65	5.09
	East Mill	1.25	7 232	4.74	1.23	3.63	4 624	4.46	0.89	3.65
	North	1.25 - 1.35	6 097	6.18	1.91	4.46	13 707	4.92	1.43	3.64
	N204	1.50					11 707	4.08	0.90	3.28
Underground Mineral Resources	Central	4.50					2 735	6.91	1.57	5.49
	West	4.15					10 060	9.62	3.31	6.64
Total Pit Constrained		1.25 - 1.50	15 753	5.55	1.53	4.17	34 411	4.78	1.21	3.70
Total Underground		4.15 - 4.50	-	-	-	-	12 796	9.04	2.94	6.39
Total Combined			15 753	5.55	1.53	4.17	47 207	5.94	1.68	4.43

Notes regarding 2022 MRE for Pine Point

- The independent QP for the 2022 MRE, as defined by NI 43-101 guidelines, is Pierre-Luc Richard, P.Geol., of PLR Resources Inc. The effective date of the 2022 MRE is March 10, 2022.
- These mineral resources are not mineral reserves as they do not have demonstrated economic viability. The quantity and grade of reported Inferred Resources in the 2022 MRE are uncertain in nature and there has been insufficient exploration to define these Inferred Resources as Indicated or Measured. However, it is reasonably expected that the majority of Inferred Resources could be upgraded to Indicated Resources with continued exploration.
- Resources are presented as undiluted and in situ for an open-pit and underground scenario and are considered to have reasonable prospects for economic extraction. The constraining pit shells were developed using overall pit slopes of 45 degrees in bedrock and 26.6 degrees in the overburden. Resources show sufficient continuity and isolated blocks were discarded; therefore, the herein 2022 MRE meet the CIM Guidelines published in November 2019.
- The 2022 MRE was prepared using GEOVIA GEMS 6.8.3 and is based on 19,509 surface drillholes and 166,376 samples, of which 7,852 drillholes and a total of 47,998 assays were included in the modeled mineralization. The drillhole database includes recent drilling of 78,195 m in 1,182 drillholes since 2017 and also incorporates Cominco's historical drillholes, the use of which was partially validated by a drillhole collar survey, twinning programs, and a partial core resampling program. The cut-off date for the drillhole database was December 31, 2019. Approximately 35,000 m in 550 drillholes were added to this project since the drillhole database cut-off date.
- The 2022 MRE encompasses 254 zinc-lead-bearing zones, each defined by individual wireframes with a minimum true thickness of 2.5 m. A value of zero grade was applied in cases of the core not assayed.
- High-grade capping was performed on the composited assay data and established on a per-zone basis for zinc and lead. Capping

OSISKO METALS INCORPORATED
Management's Discussion & Analysis
For the three-month period ended March 31, 2024

- grades vary from 10% to 35% Zn and 5% to 40% Pb.
7. Density values were calculated based on the formula established and used by Cominco during its operational period between 1964 and 1987. Density values were calculated from the density of dolomite, adjusted by the amount of sphalerite, galena, and marcasite/pyrite as determined by metal assays. A porosity of 5% was assumed. Waste material was assigned the density of porous dolomite.
 8. Grade model resource estimation was calculated from drillhole data using an Ordinary Kriging interpolation method in a percent block model using blocks measuring 10 m x 10 m x 5 m in size.
 9. Zinc equivalency percentages are calculated using long-term metal prices indicated below in (10), forecasted metal recoveries, concentrate grades, transport costs, smelter payable metals, and charges. The estimate is reported using a ZnEq cut-off varying from 1.25% to 1.50% for open-pit resources and 4.15% to 4.50% for underground resources. Variations take into consideration trucking distances from the pit constrained mineralization to the mill and metallurgical parameters for each area. The cut-off grade was calculated using the following parameters (amongst others): zinc price = USD1.30/lb; lead price = USD1.00/lb; CAD:USD exchange rate = 1.27. The cut-off grade will be re-evaluated in light of future prevailing market conditions and costs.
 10. The 2022 MRE presented herein is categorized as Inferred and Indicated Mineral Resources. The Inferred Mineral Resource category is constrained to areas where drill spacing is less than 100 m and the Indicated Mineral Resource category is constrained to areas where drill spacing is less than 30 m. In both cases, reasonable geological and grade continuity were also a criterion during the classification process.
 11. The pit optimization to develop the resource constraining pit shells was done using Hexagon's Mine Plan Version 15.8.
 12. Calculations used metric units (metre, tonne). Metal contents are presented in percent or pounds. Metric tonnages were rounded and any discrepancies in total amounts are due to rounding errors.
 13. CIM definitions and guidelines for Mineral Resource Estimates have been followed.
 14. The QP is not aware of any known environmental, permitting, legal, title-related, taxation, sociopolitical, or marketing issues, or any other relevant issues that could materially affect the 2022 MRE.

Independent Qualified Persons for the 2022 PEA

The 2022 PEA was prepared for Osisko Metals by BBA Inc. ("BBA"), WSP Canada Inc. ("WSP"), and other industry consultants, all QP under NI 43-101. The 2022 PEA was coordinated by the Company's Project Manager, Xavier Pouchain, PMP in collaboration with Osisko Development Corp.'s technical services group.

The independent QPs have reviewed and approved the content of the 2022 PEA include: Colin Hardie, P.Eng., (BBA), Pierre-Luc Richard, P. Geo. (PLR Resources Inc.), Zakaria Moctar, P. Eng., (WSP), Paul Gauthier, P. Eng., (WSP), Trent Purvis, P. Eng., (WSP), Simon Latulippe, P. Eng., (WSP), Michael Verreault, P. Eng., M.Sc.A. (HRI)

Mr. Robin Adair is the QP and Senior Technical Advisor for PPML. He is responsible for the technical data reported related to the drill results at the Pine Point Project and is a Professional Geologist registered in the Northwest Territories.

Pine Point Royalty

On January 23, 2020, the Company concluded an agreement (the "Sales Agreement") with Osisko Gold Royalties Ltd ("OGR") to sell a 1.5% NSR royalty on the Pine Point Project, for cash consideration of \$6.5 million. Pursuant to the terms of the Sales Agreement, in connection with the NSR royalty sale, the Company granted to OGR a right of first offer on any future sales by the Company of any additional royalties, streams or similar interests on the Pine Point Project. The Sale Agreement was amended on December 30, 2020 (the "NSR Amendment"). Pursuant to the NSR Amendment, the Company granted an additional 0.5% NSR royalty to OGR for \$6.5 million. On February 25, 2022, the Company finalized an agreement with OGR, pursuant to which OGR was granted a further 1.0% NSR royalty on the Pine Point Project in exchange for cash consideration of \$6.5 million. Upon closing of this agreement, OGR holds a combined 3% NSR royalty on the Pine Point Project.

Results of Operations

Three-month period ended March 31, 2024

The Company incurred a net loss of \$1.1 million during Q1-2024, compared to a net loss of \$1.5 million for the three-month period ended March 31, 2023 ("Q1-2023").

The operating loss for Q1-2024 was \$0.7 million and decreased by \$0.8 million as compared to Q1-2023. This decrease from Q1-2023 is mainly due to a decrease in employee benefit expenses (\$0.7 million) due the 2023 advancement of the Transaction with Appian as described above under the "*Transaction with Appian*" heading. All other categories of operating expenses were consistent between periods.

Non-operating costs totaled \$0.5 million for Q1-2024 (\$0.2 million for Q1-2023). This increase is due to interest expense incurred on the Convertible Note (\$1.3 million) and a loss of foreign exchange \$0.6 million which is a result of the US\$ denominated Convertible Note. This increase is partially offset by the unrealized gain on the derivative liability embedded in the Convertible Note with Glencore (\$1.5 million).

Liquidity and Capital Resources

As at March 31, 2024, the Company had a negative working capital of \$27.1 million compared to negative working capital of \$0.3 million as at December 31, 2023. Cash amounted to \$7.0 million as at March 31, 2024, compared to \$1.7 million as at December 31, 2023.

The increase of \$5.3 million in the Company's cash position during Q1-2024 is primarily due to proceeds received as part of the transaction with Appian related to a partial sale of Osisko Metals' interest in PPML (\$6.7 million). This is partially offset by investments made in E&E assets (\$0.8 million) and cash used in operating activities (\$0.5 million).

As the Company is in the exploration and evaluation stage on its projects, it has not recorded any revenues from operations, has no source of operating cash flow, and no assurance that additional funding will be available to it for further development of its projects. The working capital as at March 31, 2024 will not be sufficient to meet the Company's obligations, commitments and budgeted expenditures through March 31, 2025.

The Company's ability to continue future operations beyond March 31, 2025, and fund its planned exploration and evaluation activities at its projects is dependent on Management's ability to secure additional financing in the future. This may be completed in a number of ways, including, but not limited to, selling a royalty on its projects, the issuance of debt or equity instruments and the completion of joint venture arrangements. Management will pursue such additional sources of financing when required, and while Management has been successful in securing financing in the past, there can be no assurance it will be able to do so in the future or that these sources of funding or initiatives will be available for the Company or that they will be available on terms which are acceptable to the Company. If the funds are not available on terms satisfactory to the Company, some planned activities may be postponed and the Company will be required to re-evaluate its plans and allocate its total resources in such a manner as the Board and Management deem to be in the Company's best interest.

The discussions about working capital above does not include working capital of PPML. Subsequent to the closing of the Transaction and until Appian has acquired an ownership interest of 60% in PPML, all funding in respect of the Pine Point Project will be made by way of cash calls issued by the board of PPML. Accordingly, the Company will not be required to make any cash contributions to PPML until Appian has reached the Target Ownership Percentage, following which, cash calls will be satisfied by each of Appian and Osisko Metals on a pro-rata basis pursuant to approved annual programs and budgets as determined by the board of PPML.

OSISKO METALS INCORPORATED
Management's Discussion & Analysis
For the three-month period ended March 31, 2024

Quarterly Information

A summary of selected quarterly financial information for the last eight quarters is outlined below:

(for the three months ended)	March 31, 2024	December 31, 2023	September 30, 2023	June 30, 2023
	\$	\$	\$	\$
Cash	6,990,508	1,670,610	3,000,690	5,805,092
Working capital	(27,106,228)	(294,089)	1,463,980	5,632,265
Total assets	142,389,640	143,530,016	144,170,620	104,274,900
Investments in exploration and evaluation assets ⁽ⁱ⁾	797,560	782,048	1,829,202	70,089
Total revenue	-	-	-	-
Net income (loss)	(1,068,280)	(186,223)	194,037	12,656,416
Basic net income (loss) per share ⁽ⁱⁱ⁾	(0.004)	(0.001)	0.001	0.052
Diluted net income (loss) per share ⁽ⁱⁱ⁾	(0.004)	(0.001)	0.001	0.052

(for the three months ended)	March 31, 2023	December 31, 2022	September 30, 2022	June 30, 2022
	\$	\$	\$	\$
Cash	1,916,075	3,078,856	3,727,505	12,711,755
Working capital	(17,268,256)	(4,682,039)	(1,304,686)	8,069,058
Total assets	113,634,004	104,839,574	114,353,400	112,467,705
Investments in exploration and evaluation assets ⁽ⁱ⁾	7,857,745	7,528,908	6,739,233	4,884,112
Total revenue	-	-	-	-
Net loss	(1,452,374)	(15,753,644)	(93,753)	(833,037)
Basic and diluted net loss per share ⁽ⁱⁱ⁾	(0.006)	(0.070)	(0.000)	(0.004)

(i) Including the payments of options on properties, on a cash basis.

(ii) Net loss per share is based on each reporting period's weighted average number of shares outstanding, which may differ on a quarter-to-quarter basis. As such, the sum of the quarterly net loss per share amounts may not equal year-to-date net loss per share.

The changes in the Company's cash and cash equivalents and working capital are directly impacted by the level of investments made in E&E activities and the sales of royalties and assets, in addition to financings completed during the periods. Over the last eight quarters, the variation in the operating loss per quarter has been impacted by the level of corporate activity at the Company. The timing of non-cash expenses (such as share-based compensation and impairment of E&E assets) and non-cash income (such as income tax recoveries) are the main reasons for significant quarterly variations (increase or decrease) in net loss over the last eight quarters.

In addition, as discussed under the "Transaction with Appian" and "The Gaspé Copper Transaction" headings, the closing of transactions with Appian (in Q2-2023 and Q1-2024) and Glencore (in Q3-2023) have impacted the net income (loss) of the Company.

Outlook

The Company's development strategy is focused on the development of economic mineral deposits with exploration upside potential, where the benefits of developing and operating mines or the sale of these mining assets, will ensure the Company's sustainability. Management, while implementing its development strategy, analyzes the global market supply and demand context regarding the commodities that the Company is developing and the overall stock market.

Osisko Metals is developing two of Canada's premier past-producing brownfield assets – the Gaspé Copper Project and the Pine Point Project with its joint venture with Appian.

Osisko Metals completed the 2022 PEA on the Pine Point Project in July 2022, which incorporated operational improvements to the mining plan, mineral resource inventory, dewatering estimates, and operational strategy compared to the previous PEA completed in 2020. The 2022 PEA leveraged the substantial infrastructure already present on-site.

OSISKO METALS INCORPORATED
Management's Discussion & Analysis
For the three-month period ended March 31, 2024

The Company, along with Appian, will continue to de-risk the Pine Point Project and bring further improvements to the 2022 PEA through the following activities:

- Incorporate previous drilling campaigns (2020, 2021 and 2022) in addition to the most recently completed drilling campaign during the winter of 2023. All campaigns focused on expansion and definition drilling of historical resources to convert the maximum amount of the Mineral Resources to the Indicated category in order to be incorporated into the feasibility study.
- This drilling will be incorporated into an updated MRE that will be completed concurrently along with the Pine Point Project's Feasibility Study, expected to be initiated in the summer of 2024.
- A renewed focus on the EA process and permitting commenced in 2023 and discussions are underway to establish the framework of IBA agreements following the Joint Venture with Appian.

Subsequent to signing the option agreement with Glencore on the Gaspé Copper Project, the Company released the Initial MRE for the Mount Copper deposit. This was the Company's first step in its comprehensive strategy to fully evaluate all potentially economic copper deposits remaining within this past-producing porphyry copper/skarn stockwork complex. The Company completed the 2022 summer drill program to upgrade the Mineral Resource Estimate to the Measured & Indicated categories to use in an eventual Feasibility Study. The Company announced an updated, NI 43-101 compliant, pit-constrained Mineral Resource Estimate for the Mount Copper deposit in Q2-2024 and intends to launch a PEA in Q3-2024 on the Mount Copper deposit to rapidly develop this asset.

Related Party Transactions

Key management includes directors and officers of the Company. The compensation paid or payable to key management for employee services for the three-month periods ended March 31, 2024 and 2023 are:

	<u>2024</u>	<u>2023</u>
	\$	\$
Salaries and short-term employee benefits	75,000	162,500
Share-based compensation	55,579	72,405
	<u>130,579</u>	<u>234,905</u>

On March 26, 2024, the Company granted Options to certain directors, officers, key employees and key consultants to purchase up to an aggregate of 1,935,000 Common Shares. This grant is subject to a three-year vesting period and a five-year term at an exercise price of \$0.155 per Common Share.

Commitments and Obligations

The Company has an environmental rehabilitation obligation totaling \$4.5 million, which represents the present value of the estimated amount of undiscounted cash flows required to satisfy the environmental rehabilitation obligation in respect of the Gaspé Copper Project.

On July 12, 2023, the Company received \$3,500,000 following the issuance of flow-through shares for which the Company renounced tax deductions as at December 31, 2023. As at March 31, 2024, \$2.1 million remains to be incurred by December 31, 2024.

Off-balance Sheet Items

As of May 15, 2024, the Company has no off-balance sheet arrangements.

Outstanding Share Data

As of May 15, 2024, the Company has 256,574,935 issued and outstanding Common Shares, 12,435,000 outstanding stock options and 11,612,291 outstanding Warrants.

Risk Factors

An investment in the Company's common shares is subject to a number of risks and uncertainties. An investor should carefully consider the risks described below and the other information filed with the Canadian securities regulators (www.sedarplus.ca), before investing in the Company's common shares. If any of the described risks occur, or if others occur, the Company's business, operating results and financial condition could be seriously harmed and investors may lose a significant proportion of their investment.

The following risk factors may not be a definitive list of all risk factors associated with an investment in Osisko Metals or in connection with the business and operations of Osisko Metals.

Industry Conditions

The exploration for and development of mineral deposits involve significant risks and while the discovery of an ore body may result in substantial rewards, few properties that are explored are ultimately developed into producing mines. All of Osisko Metals' properties are in the exploration stage and Osisko Metals is presently not exploiting any of its properties and its future success will depend on its capacity to generate revenues from an exploited property.

The discovery of mineral deposits depends on a number of factors, including the professional qualification of its personnel in charge of exploration. Whether a mineral deposit will be commercially viable depends on a number of factors, some of which are the particular attributes of the deposit, such as size, grade and proximity to infrastructure, as well as metal prices which are highly cyclical and government regulations, including regulations relating to prices, taxes, royalties, land tenure, land use, importing and exporting of minerals and environmental protection. In the event that Osisko Metals wishes to commercially exploit one of its properties, the exact effect of these factors cannot be accurately predicted, but the combination of these factors may result in Osisko Metals not receiving an adequate return on invested capital. Osisko Metals' operations will be subject to all the hazards and risks normally encountered in the exploration and development of mineral deposits. Mining operations generally involve a high degree of risk, including unusual and unexpected geologic formations. There can be no guarantee that sufficient quantities of minerals will be discovered or that one of Osisko Metals' properties will reach the commercial production stage.

Regulatory Matters

Osisko Metals' activities are subject to governmental laws and regulations. These activities can be affected at various levels by governmental regulation governing prospecting and development, price control, taxes, labour standards and occupational health, expropriation, mine safety and other matters. Exploration and commercialization are subject to various federal, provincial and local laws and regulations relating to the protection of the environment. These laws impose high standards on the mining industry to monitor the discharge of wastewater and report the results of such monitoring to regulatory authorities, to reduce or eliminate certain effects on or into land, water or air, to progressively rehabilitate mine properties, to manage hazardous wastes and materials and to reduce the risk of worker accidents.

Failure to comply with applicable laws and regulations may result in civil or criminal fines or penalties or enforcement actions, including orders issued by regulatory or judicial authorities enjoining or curtailing operations or requiring corrective measures, installation of additional equipment or remedial actions, any of which could result in significant expenditures. Osisko Metals may also be required to compensate private parties suffering loss or damage by reason of a breach of such laws, regulations or permitting requirements. It is also possible that future laws and regulations, or more stringent enforcement of current laws and regulations by governmental authorities, could cause additional expense, capital expenditures, restrictions on or suspensions of Osisko Metals' activities and delays in the exploration of properties.

Amendments to current laws, regulations and permits governing operations and activities of mining companies, or more stringent implementation thereof, could have a material adverse impact on Osisko Metals and cause increases in capital expenditures or production costs or reduction in levels of production at producing properties or require abandonment or delays in development of new mining properties.

Competition

Osisko Metals' activities are directed towards the exploration and evaluation of mineral deposits. There is no certainty that the expenditures to be made by Osisko Metals will result in discoveries of commercial quantities of mineral deposits. There is aggressive competition within the mining industry for the discovery and acquisition of properties considered to have commercial potential. Osisko Metals will compete with other interests, many of which have greater financial resources than it will have, for the opportunity to participate in promising projects. Significant capital

OSISKO METALS INCORPORATED

Management's Discussion & Analysis

For the three-month period ended March 31, 2024

investment is required to achieve commercial production from successful exploration efforts, and Osisko Metals may not be able to successfully raise funds required for any such capital investment.

Osisko Metals' operations are subject to financing risks and additional financing may result in dilution or partial sale of assets

Osisko Metals' operations are subject to financing risks. At the present time, Osisko Metals does not have any producing projects and no sources of revenue. Osisko Metals' ability to explore for and find potential economic projects, and then to bring them into production, is highly dependent upon its ability to raise equity and debt capital in the financial markets. Any projects that Osisko Metals develops will require significant capital expenditures. To obtain such funds, Osisko Metals may sell additional securities including, but not limited to, Osisko Metals common shares or some form of convertible security, the effect of which could result in a substantial dilution of the equity interests of the Osisko Metals Shareholders. Alternatively, Osisko Metals may also sell a part of its interest in an asset in order to raise capital. There is no assurance that Osisko Metals will be able to raise the funds required to continue its exploration programs and finance the development of any potentially economic deposit that is identified on acceptable terms or at all. The failure to obtain the necessary financing could have a material adverse effect.

Economics of developing mineral properties

Mineral exploration and development is speculative and involves a high degree of risk. While the discovery of an ore body may result in substantial rewards, few properties which are explored are commercially mineable and ultimately developed into producing mines. There is no assurance that any exploration properties will be commercially mineable.

Should any mineral resources exist, substantial expenditures will be required to confirm mineral reserves which are sufficient to commercially mine and to obtain the required environmental approvals and permitting required to commence commercial operations. The decision as to whether a property contains a commercially viable mineral deposit and should be brought into production will depend upon the results of exploration programs and/or feasibility studies, and the recommendations of duly qualified engineers and/or geologists, all of which involves significant expense. This decision will involve consideration and evaluation of several significant factors including, but not limited to: (a) costs of bringing a property into production, including exploration and development work, preparation of production feasibility studies and construction of production facilities; (b) availability and costs of financing; (c) ongoing costs of production; (d) metal prices; (e) environmental compliance regulations and restraints (including potential environmental liabilities associated with historical exploration activities); and (f) political climate and/or governmental regulation and control. Development projects are also subject to the successful completion of engineering studies, issuance of necessary governmental permits, and availability of adequate financing. Development projects have no operating history upon which to base estimates of future cash flow.

Osisko Metals may be subject to liability or sustain loss for certain risks and hazards against which it does not or cannot economically insure

Mining is capital intensive and subject to a number of risks and hazards, including environmental pollution, accidents or spills, industrial and transportation accidents, labour disputes, changes in the regulatory environment, natural phenomena (such as inclement weather conditions, earthquakes, pit wall failures and cave-ins) and encountering unusual or unexpected geological conditions. Such risk and hazards might impact Osisko Metals' business. Consequently, many of the foregoing risks and hazards could result in damage to, or destruction of, Osisko Metals' mineral properties or future processing facilities, personal injury or death, environmental damage, delays in or interruption of or cessation of their exploration or development activities, delay in or inability to receive required regulatory approvals, or costs, monetary losses and potential legal liability and adverse governmental action. Osisko Metals may be subject to liability or sustain loss for certain risks and hazards against which it does not or cannot insure or against which it may reasonably elect not to insure because of the cost. This lack of insurance coverage could result in material economic harm to Osisko Metals. Reclamation costs are uncertain and planned expenditures estimated by management may differ from the actual expenditures required.

Information systems and cyber security

Osisko Metals relies on its IT infrastructure to meet its business objectives. Osisko Metals uses different IT systems, networks, equipment and software and has adopted security measures to prevent and detect cyber threats. However, Osisko Metals and third-party service providers and vendors may be vulnerable to cyber threats, which have been evolving in terms of sophistication and new threats are emerging at an increased rate. Unauthorized third parties may be able to penetrate network security and misappropriate or compromise confidential information, create system disruptions or cause shutdowns to Osisko Metals or its counterparties. Although Osisko Metals has not experienced

OSISKO METALS INCORPORATED

Management's Discussion & Analysis

For the three-month period ended March 31, 2024

any losses relating to cyber-attacks or other information security breaches, there can be no assurance that there will be no such loss in the future. Significant security breaches or system failures of Osisko Metals or its counterparties, especially if such breach goes undetected for a period of time, may result in significant costs, fines or lawsuits and damage to reputation. The significance of any cyber security breach is difficult to quantify, but may in certain circumstances be material and could have a material adverse effect on Osisko Metals' business.

Factors beyond the control of Osisko Metals

The potential profitability of mineral properties is dependent upon many factors beyond Osisko Metals' control. For instance, world prices of and markets for minerals are unpredictable, highly volatile, potentially subject to governmental fixing, pegging and/or controls and respond to changes in domestic, international, political, social and economic environments. Another factor is that rates of recovery of minerals from mined ore (assuming that such mineral deposits are known to exist) may vary from the rate experienced in tests and a reduction in the recovery rate will adversely affect profitability and, possibly, the economic viability of a property. Profitability also depends on the costs of operations, including costs of labour, equipment, electricity, environmental compliance or other production inputs. Such costs will fluctuate in ways Osisko Metals cannot predict and are beyond Osisko Metals' control, and such fluctuations will impact profitability and may eliminate profitability altogether. Additionally, due to worldwide economic uncertainty, the availability and cost of funds for development and other costs have become increasingly difficult, if not impossible, to project. These changes and events may materially affect the financial performance of Osisko Metals and they may also negatively impact the project schedule.

Infectious Disease Outbreaks

Osisko Metals faces risks related to health epidemics, pandemics and other outbreaks of infectious diseases, which could significantly disrupt, directly or indirectly, its operations and may materially and adversely affect its business and financial conditions.

Osisko Metals' business could be adversely impacted by the effects of the coronavirus or other epidemics or pandemics. The extent to which an epidemic or pandemic impacts Osisko Metals' business, including its operations and the market for its securities, will depend on future developments, which are highly uncertain and cannot be predicted at this time, and include the duration, severity and scope of an outbreak and the actions taken to contain or treat such outbreak. In particular, the continued spread of the coronavirus globally could materially and adversely impact Osisko Metals' business including without limitation, employee health, workforce productivity, increased insurance premiums, limitations on travel, the availability of industry experts and personnel, operations and business of third party operators, and other factors that will depend on future developments beyond Osisko Metals' control, which may have a material and adverse effect on its business, financial condition and results of operations. There can be no assurance that Osisko Metals' personnel will not be impacted by these pandemic diseases and ultimately see its workforce productivity reduced or incur increased medical costs / insurance premiums as a result of these health risks.

In addition, a significant outbreak of infectious diseases could result in a widespread global health crisis that could adversely affect global economies and financial markets resulting in an economic downturn that could have an adverse effect on the demand for precious metals and Osisko Metals' future prospects.

Fluctuation in market value of Osisko Metals common shares

The market price of Osisko Metals common shares is affected by many variables not directly related to the corporate performance of Osisko Metals, including the strength of the economy generally, the availability and attractiveness of alternative investments, and the breadth of the public market for the stock. The effect of these and other factors on the market price of the Osisko Metals common shares in the future cannot be predicted.

Financial Risks

The Company's activities expose it to a variety of financial risks: market risks (including foreign currency risk), credit risk and liquidity risk. The Company's overall risk management program focuses on the unpredictability of financial markets and seeks to minimize potential adverse effects on the Company's performance.

A description of the financial risks are included in the Annual Financial Statements, filed on SEDAR+ (www.sedarplus.ca).

Internal Control Disclosure

In November 2007, the Canadian Securities Administrators exempted issuers on the TSXV, such as the Company, from certifying disclosure controls and procedures, as well as internal controls over financial reporting as of December 31, 2007, and thereafter. The Company is required to file basic certificates. The Company makes no assessment relating to establishment and maintenance of disclosure controls and procedures as defined under National Instrument 52-109.

Basis of Presentation of Financial Statements

The Financial Statements have been prepared in accordance with the IFRS Accounting Standard.

The Board has approved the Financial Statements on May 15, 2024.

The significant accounting policies of Osisko Metals, as well as the accounting standards issued but not yet effective, are detailed in the notes to the Annual Financial Statements, filed on SEDAR+ (www.sedarplus.ca); except for the following:

Amendments – IAS 1 Presentation of Financial Statements: Classification of liabilities as current or non-current and non-current liabilities with covenants

The Company applied Classification of Liabilities as Current or Non-current – Amendments to IAS 1 for the first time from January 1, 2024. The amendments:

- Clarify that the classification of liabilities as current or non-current should only be based on rights that are in place "at the end of the reporting period";
- Clarify that classification is unaffected by intentions or expectations about whether an entity will exercise its right to defer settlement of a liability; and
- Make clear that settlement includes transfers to the counterparty of cash, equity instruments, other assets or services that result in extinguishment of the liability.

The application of the Amendments to IAS 1 resulted in a change in the Company's accounting policy for classification of liabilities that can be settled in the Company's own shares (e.g. the Convertible Note) from non-current to current liabilities. Under the revised accounting policy, when a liability includes a counterparty conversion option that may be settled by the issuance of the Company's common shares ("Common Shares"), the conversion option is taken into account in classifying the liability as current or non-current except when it is classified as an equity component of a compound instrument. The Convertible Note is classified as current as at March 31, 2024, because the conversion option can be exercised by Convertible Note holder at any time. The Amendments to IAS 1 had a retrospective impact on the comparative consolidated statement of financial position as the Company had the Convertible Note outstanding as at December 31, 2023. The Convertible Note as at December 31, 2023, was entirely reclassified from non-current to current liabilities. The Company's other liabilities were not impacted by the Amendments to IAS 1.

Critical Accounting Judgments, Estimates and Assumptions

Estimates and assumptions are continually evaluated and are based on historical experience and other factors, including expectations of future events that are believed to be reasonable under the circumstances. The determination of estimates requires the exercise of judgment based on various assumptions and other factors such as historical experience and current and expected economic conditions. Actual results could differ from those estimates.

The critical accounting, judgments, estimates and assumptions are the same as those in the Annual Financial Statements filed on SEDAR+ (www.sedarplus.ca).

Financial Instruments

All financial instruments are required to be measured at fair value on initial recognition. The fair value is based on quoted market prices, unless the financial instruments are not traded in an active market. In this case, the fair value is determined by using valuation techniques like the Black-Scholes option pricing model or other valuation techniques. Measurement in subsequent periods depends on the classification of the financial instrument.

A description of financial instruments and their fair value is included in the Annual Financial Statements filed on SEDAR+ (www.sedarplus.ca).

Additional Information

Additional information relating to the Company has been filed on SEDAR+ and is available at www.sedarplus.ca.

Cautionary Statement Regarding Forward-Looking Statements

Statements contained in this document that are not historical facts are regarded as forward-looking statements. Such forward-looking statements include, but are not limited to, statements relating to the future financial or operating performance of the Company; the Company's mineral projects; the future price of metals; the estimation of mineral resources; the realization of mineral resource estimates; the timing and amount of estimated future production (if any); capital, operating and exploration expenditures; the ability to identify additional resources and reserves (if any) and exploit such resources and reserves on an economic basis; costs and timing of future exploration; use of proceeds from financings; the timing and ability of the Company to complete a feasibility study for the Pine Point Project; the ability of the Company to obtain any outstanding permits or approvals required for its operations; the timing and ability of the Company to advance the Pine Point Project and/or the Gaspé Copper Project towards a production decision (if at all); Osisko Metals' overall strategy to advance the Pine Point Project and the Gaspé Copper Project; the results of the 2022 PEA and the IRR, NPV and estimated costs, production, production rate and mine life for the Pine Point Project; the expectation that the Pine Point Project will be a robust operation and profitable at a variety of prices and assumptions; the MOU with NTPC outlining the process of negotiating future power supply from the Taltson hydroelectric grid and power purchase agreements; requirements for additional capital; government regulation of mining operations and mineral exploration activities; the significance (if any) of the Gaspé Copper Project and Pine Point Project being past producers and the results of such past production; the timing and ability to complete the Transaction on the terms contemplated (if at all); the ability of the Company to realize on the benefits of the Transaction; and the impact to the Company of the disposition of ownership interest and control in the Pine Point Project, which is a material property of the Company. These statements may involve risk, uncertainties and other factors that could cause actual results to differ materially from those expressed or implied by such forward-looking statements. Many factors could cause such differences, including: volatility in market metal prices; changes in foreign currency exchange rates and interest rates; unexpected variations in geological conditions of a property or erroneous geological data; environmental risks including increased regulatory constraints; unexpected adverse mining conditions; adverse political conditions; changes in government regulations and policies; the ability of exploration activities, including drilling, to accurately predict metallurgy; the preliminary nature of metallurgical test results; the accuracy of mineral resource estimates; delays in obtaining or failures to obtain required governmental, environmental or other project approvals; production costs; operating conditions being favourable; availability of equipment; positive relations with local groups; uncertainties relating to the availability and costs of financing needed in the future; changes in equity markets; inflation; fluctuations in commodity prices; delays in the development of the Pine Point Project and/or the Gaspé Copper Project; and the other risks involved in the mineral exploration and development industry.

OSISKO METALS INCORPORATED

Management's Discussion & Analysis

For the three-month period ended March 31, 2024

Although Osisko Metals has attempted to identify important factors that could cause actual plans, actions, events or results to differ materially from those described in forward-looking statements, there may be other factors that cause plans, actions, events or results not to be as anticipated, estimated or intended. The forward-looking information contained herein is given as of the date of this MD&A and the Company disclaims any obligation to update any forward-looking information, whether as a result of new information, future events, or results, except as may be required by applicable securities laws. There can be no assurance that forward-looking statements will prove to be accurate, as actual plans, results and future events could differ materially from those anticipated in such statements. Accordingly, readers should not place undue reliance on forward-looking statements.

(Signed) Robert Wares

Robert Wares

Chairman and Chief Executive Officer

(Signed) Anthony Glavac

Anthony Glavac

Chief Financial Officer

May 15, 2024

OSISKO METALS INCORPORATED

Management's Discussion & Analysis

For the three-month period ended March 31, 2024

Corporate Information**Head Office**

1100 av. des Canadiens-de-Montréal

Suite 300

Montréal, Québec, Canada H3B 2S2

Tel.: (514) 861-4441

Web site: www.osiskometals.com**Directors**

Robert Wares, Chairman

Jeff Hussey

Luc Lessard

Amy Satov

Donald Siemens

Cathy Singer

Peter Wright

Officers

Robert Wares, Chairman and Chief Executive Officer

Anthony Glavac, Chief Financial Officer

Ann Lamontagne, VP Environment and Sust. Development

Lili Mance, Corporate Secretary

Auditors

PricewaterhouseCoopers LLP/s.r.l./s.e.n.c.r.l.

Transfer Agent

TSX Trust Company

Exchange listing

TSX Venture Exchange: OM

Frankfurt Stock Exchange: OB5

OTCQX: OMZNF